

Datasheet for ABIN7260743

**anti-KISS1R antibody**

## 4 Images

[Go to Product page](#)

## Overview

Quantity:	200 µL
Target:	KISS1R
Reactivity:	Human, Mouse, Rat
Host:	Rabbit
Clonality:	Polyclonal
Conjugate:	This KISS1R antibody is un-conjugated
Application:	Western Blotting (WB), Immunohistochemistry (IHC)

## Product Details

Immunogen:	A synthetic peptide of human KISS1R
Isotype:	IgG
Characteristics:	Polyclonal Antibody
Purification:	Affinity purification

## Target Details

Target:	KISS1R
Alternative Name:	KISS1R ( <a href="#">KISS1R Products</a> )
Background:	The protein encoded by this gene is a galanin-like G protein-coupled receptor that binds metastin, a peptide encoded by the metastasis suppressor gene KISS1. The tissue distribution of the expressed gene suggests that it is involved in the regulation of endocrine function, and this is supported by the finding that this gene appears to play a role in the onset of puberty.

## Target Details

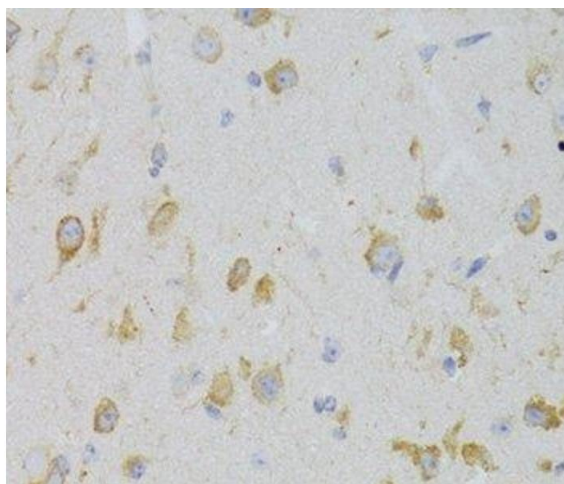
	Mutations in this gene have been associated with hypogonadotropic hypogonadism and central precocious puberty.
Molecular Weight:	Observed_MW: 43 kDa Calculated_MW: 42 kDa
Gene ID:	84634
UniProt:	<a href="#">Q969F8</a>

## Application Details

Application Notes:	WB 1:500-1:1000 IHC 1:50-1:100
Restrictions:	For Research Use only

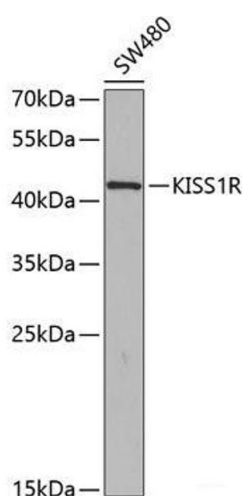
## Handling

Format:	Liquid
Concentration:	1 mg/mL
Buffer:	PBS with 0.02 % sodium azide, 50 % glycerol, pH 7.3
Preservative:	Sodium azide
Precaution of Use:	This product contains Sodium azide: a POISONOUS AND HAZARDOUS SUBSTANCE which should be handled by trained staff only.
Storage:	-20 °C
Storage Comment:	Store at -20°C. Avoid freeze / thaw cycles.



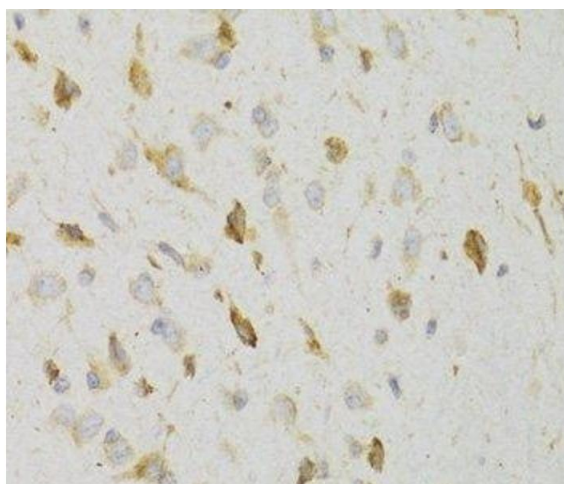
#### Immunohistochemistry (Paraffin-embedded Sections)

**Image 1.** Immunohistochemistry of paraffin-embedded Mouse brain using KISS1R Polyclonal Antibody at dilution of 1:100 (40x lens).



#### Western Blotting

**Image 2.** Western blot analysis of extracts of SW480 cells using KISS1R Polyclonal Antibody at dilution of 1:350.



#### Immunohistochemistry (Paraffin-embedded Sections)

**Image 3.** Immunohistochemistry of paraffin-embedded Rat brain using KISS1R Polyclonal Antibody at dilution of 1:100 (40x lens).

Please check the [product details page](#) for more images. Overall 4 images are available for ABIN7260743.