

Datasheet for ABIN7260761
anti-Kallikrein 5 antibody

2 Images

[Go to Product page](#)

Overview

Quantity:	200 µL
Target:	Kallikrein 5 (KLK5)
Reactivity:	Human, Mouse, Rat
Host:	Rabbit
Clonality:	Polyclonal
Conjugate:	This Kallikrein 5 antibody is un-conjugated
Application:	Immunohistochemistry (IHC)

Product Details

Immunogen:	A synthetic peptide of human KLK5
Isotype:	IgG
Characteristics:	Polyclonal Antibody
Purification:	Affinity purification

Target Details

Target:	Kallikrein 5 (KLK5)
Alternative Name:	KLK5 (KLK5 Products)
Background:	Kallikreins are a subgroup of serine proteases having diverse physiological functions. Growing evidence suggests that many kallikreins are implicated in carcinogenesis and some have potential as novel cancer and other disease biomarkers. This gene is one of the fifteen kallikrein subfamily members located in a cluster on chromosome 19. Its expression is up-regulated by

Target Details

estrogens and progestins. The encoded protein is secreted and may be involved in desquamation in the epidermis. Alternative splicing results in multiple transcript variants encoding the same protein.

Gene ID: 25818

UniProt: [Q9Y337](#)

Pathways: [Complement System](#), [Regulation of G-Protein Coupled Receptor Protein Signaling](#)

Application Details

Application Notes: IHC 1:50-1:200

Restrictions: For Research Use only

Handling

Format: Liquid

Concentration: 1 mg/mL

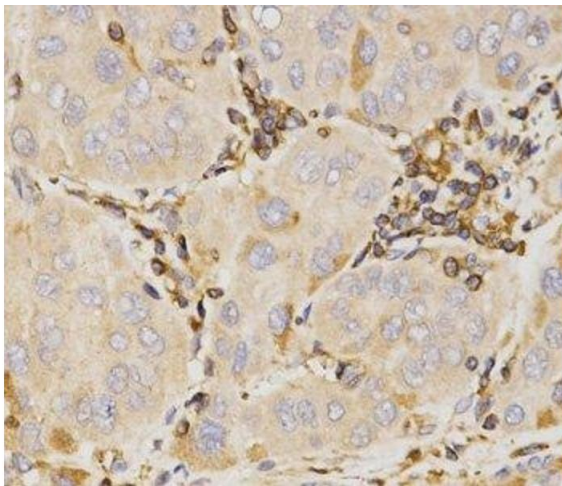
Buffer: PBS with 0.02 % sodium azide, 50 % glycerol, pH 7.3

Preservative: Sodium azide

Precaution of Use: This product contains Sodium azide: a POISONOUS AND HAZARDOUS SUBSTANCE which should be handled by trained staff only.

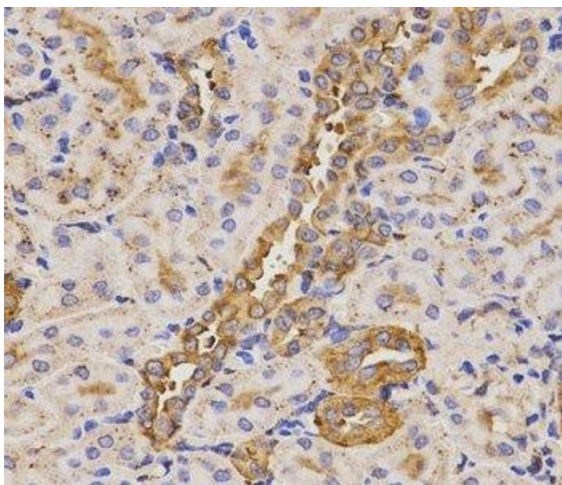
Storage: -20 °C

Storage Comment: Store at -20°C. Avoid freeze / thaw cycles.



Immunohistochemistry (Paraffin-embedded Sections)

Image 1. Immunohistochemistry of paraffin-embedded Human liver cancer using KLK5 Polyclonal Antibody at dilution of 1:200 (40x lens).



Immunohistochemistry (Paraffin-embedded Sections)

Image 2. Immunohistochemistry of paraffin-embedded Rat kidney using KLK5 Polyclonal Antibody at dilution of 1:200 (40x lens).