

Datasheet for ABIN7260785

anti-MYL9 antibody

4 Images

[Go to Product page](#)

Overview

| | |
|--------------|--|
| Quantity: | 200 µL |
| Target: | MYL9 |
| Reactivity: | Human, Mouse, Rat |
| Host: | Rabbit |
| Clonality: | Polyclonal |
| Conjugate: | This MYL9 antibody is un-conjugated |
| Application: | Western Blotting (WB), Immunofluorescence (IF) |

Product Details

| | |
|------------------|--|
| Immunogen: | A synthetic peptide of human MYL9 (NP_006088.2). |
| Isotype: | IgG |
| Characteristics: | Polyclonal Antibody |
| Purification: | Affinity purification |

Target Details

| | |
|-------------------|--|
| Target: | MYL9 |
| Alternative Name: | MYL9 (MYL9 Products) |
| Background: | <p>Myosin, a structural component of muscle, consists of two heavy chains and four light chains. The protein encoded by this gene is a myosin light chain that may regulate muscle contraction by modulating the ATPase activity of myosin heads. The encoded protein binds calcium and is activated by myosin light chain kinase. Two transcript variants encoding different isoforms</p> |

Target Details

| | |
|-------------------|---|
| | have been found for this gene. |
| Molecular Weight: | Observed_MW: 20 kDa Calculated_MW: 13 kDa/19 kDa |
| Gene ID: | 10398 |
| UniProt: | P24844 |

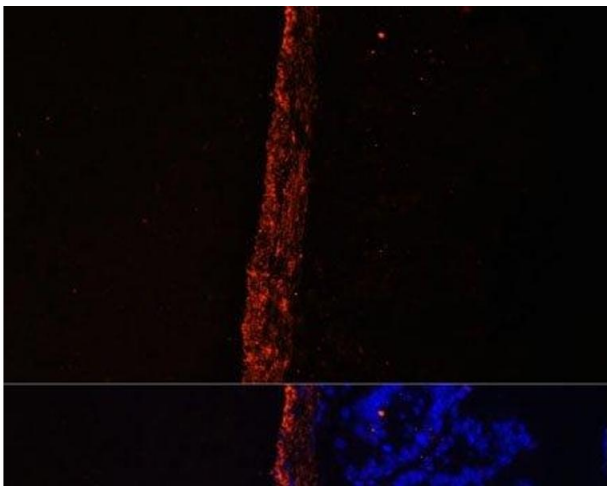
Application Details

| | |
|--------------------|-------------------------------|
| Application Notes: | WB 1:500-1:2000 IF 1:50-1:200 |
| Restrictions: | For Research Use only |

Handling

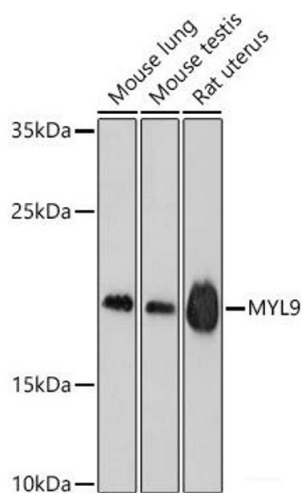
| | |
|--------------------|--|
| Format: | Liquid |
| Concentration: | 1 mg/mL |
| Buffer: | PBS with 0.02 % sodium azide, 50 % glycerol, pH 7.3 |
| Preservative: | Sodium azide |
| Precaution of Use: | This product contains Sodium azide: a POISONOUS AND HAZARDOUS SUBSTANCE which should be handled by trained staff only. |
| Storage: | -20 °C |
| Storage Comment: | Store at -20°C. Avoid freeze / thaw cycles. |

Images



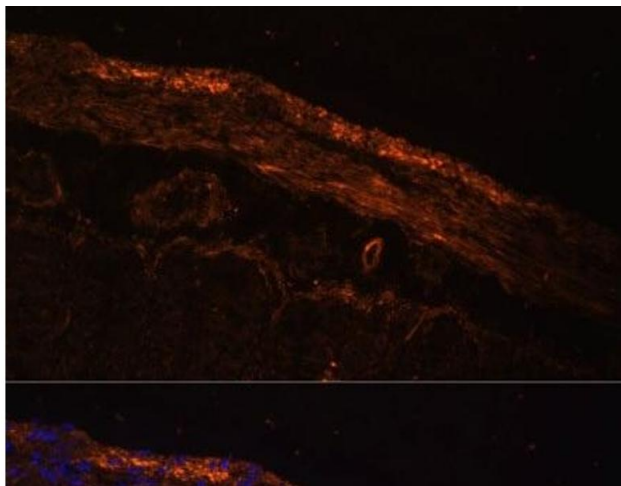
Immunofluorescence

Image 1. Immunofluorescence analysis of Mouse intestine using MYL9 Polyclonal Antibody at dilution of 1:100. Blue: DAPI for nuclear staining.



Western Blotting

Image 2. Western blot analysis of extracts of various cell lines using MYL9 Polyclonal Antibody at dilution of 1:1000.



Immunofluorescence

Image 3. Immunofluorescence analysis of Rat intestine using MYL9 Polyclonal Antibody at dilution of 1:100. Blue: DAPI for nuclear staining.

Please check the [product details page](#) for more images. Overall 4 images are available for ABIN7260785.