

## Datasheet for ABIN7260801 **anti-PAX2A antibody**



[Go to Product page](#)

### 1 Image

#### Overview

Quantity:	200 µL
Target:	PAX2A
Reactivity:	Human, Mouse
Host:	Rabbit
Clonality:	Polyclonal
Conjugate:	This PAX2A antibody is un-conjugated
Application:	Immunofluorescence (IF)

#### Product Details

Immunogen:	A synthetic peptide of human PAX2
Isotype:	IgG
Characteristics:	Polyclonal Antibody
Purification:	Affinity purification

#### Target Details

Target:	PAX2A
Alternative Name:	PAX2 ( <a href="#">PAX2A Products</a> )
Background:	PAX2 encodes paired box gene 2, one of many human homologues of the Drosophila melanogaster gene prd. The central feature of this transcription factor gene family is the conserved DNA-binding paired box domain. PAX2 is believed to be a target of transcriptional suppression by the tumor suppressor gene WT1. Mutations within PAX2 have been shown to

## Target Details

result in optic nerve colobomas and renal hypoplasia. Alternative splicing of this gene results in multiple transcript variants.

Gene ID: 5076

UniProt: [Q02962](#)

Pathways: [Carbohydrate Homeostasis](#), [Stem Cell Maintenance](#), [Tube Formation](#)

## Application Details

Application Notes: IF 1:50-1:200

Restrictions: For Research Use only

## Handling

Format: Liquid

Concentration: 1 mg/mL

Buffer: PBS with 0.02 % sodium azide, 50 % glycerol, pH 7.3

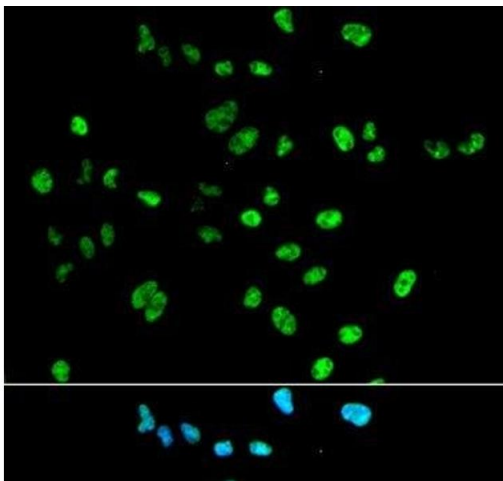
Preservative: Sodium azide

Precaution of Use: This product contains Sodium azide: a POISONOUS AND HAZARDOUS SUBSTANCE which should be handled by trained staff only.

Storage: -20 °C

Storage Comment: Store at -20°C. Avoid freeze / thaw cycles.

## Images



### Immunofluorescence

**Image 1.** Immunofluorescence analysis of A549 cells using PAX2 Polyclonal Antibody