

Datasheet for ABIN7260845

anti-Biliverdin Reductase antibody[Go to Product page](#)**1** Image

Overview

Quantity:	200 µL
Target:	Biliverdin Reductase (BLVRA)
Reactivity:	Human, Rat, Mouse
Host:	Rabbit
Clonality:	Polyclonal
Conjugate:	This Biliverdin Reductase antibody is un-conjugated
Application:	Western Blotting (WB)

Product Details

Immunogen:	Recombinant fusion protein of human BLVRA (NP_001240752.1).
Isotype:	IgG
Characteristics:	Polyclonal Antibody
Purification:	Affinity purification

Target Details

Target:	Biliverdin Reductase (BLVRA)
Alternative Name:	BLVRA (BLVRA Products)
Background:	The protein encoded by this gene belongs to the biliverdin reductase family, members of which catalyze the conversion of biliverdin to bilirubin in the presence of NADPH or NADH. Mutations in this gene are associated with hyperbiliverdinemia. Alternatively spliced transcript variants have been found for this gene.

Target Details

Molecular Weight:	Observed_MW: 33 kDa Calculated_MW: 33 kDa
Gene ID:	644
UniProt:	P53004

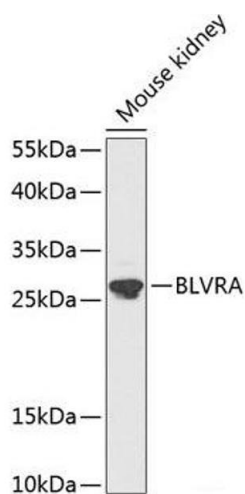
Application Details

Application Notes:	WB 1:500-1:2000
Restrictions:	For Research Use only

Handling

Format:	Liquid
Concentration:	1 mg/mL
Buffer:	PBS with 0.02 % sodium azide, 50 % glycerol, pH 7.3
Preservative:	Sodium azide
Precaution of Use:	This product contains Sodium azide: a POISONOUS AND HAZARDOUS SUBSTANCE which should be handled by trained staff only.
Storage:	-20 °C
Storage Comment:	Store at -20°C. Avoid freeze / thaw cycles.

Images



Western Blotting

Image 1. Western blot analysis of extracts of Mouse kidney using BLVRA Polyclonal Antibody at dilution of 1:1000.