

Datasheet for ABIN7260851

**anti-Septin 7 antibody**

5 Images

[Go to Product page](#)

## Overview

Quantity:	200 µL
Target:	Septin 7 (SEPT7)
Reactivity:	Human, Rat, Mouse
Host:	Rabbit
Clonality:	Polyclonal
Conjugate:	This Septin 7 antibody is un-conjugated
Application:	Western Blotting (WB), Immunohistochemistry (IHC), Immunofluorescence (IF)

## Product Details

Immunogen:	Recombinant fusion protein of human 44081 (NP_001011553.2).
Isotype:	IgG
Characteristics:	Polyclonal Antibody
Purification:	Affinity purification

## Target Details

Target:	Septin 7 (SEPT7)
Alternative Name:	SEPT7 ( <a href="#">SEPT7 Products</a> )
Background:	<p>This gene encodes a protein that is highly similar to the CDC10 protein of <i>Saccharomyces cerevisiae</i>. The protein also shares similarity with Diff 6 of <i>Drosophila</i> and with H5 of mouse. Each of these similar proteins, including the yeast CDC10, contains a GTP-binding motif. The yeast CDC10 protein is a structural component of the 10 nm filament which lies inside the</p>

## Target Details

cytoplasmic membrane and is essential for cytokinesis. This human protein functions in gliomagenesis and in the suppression of glioma cell growth, and it is required for the association of centromere-associated protein E with the kinetochore. Alternative splicing results in multiple transcript variants. Several related pseudogenes have been identified on chromosomes 5, 7, 9, 10, 11, 14, 17 and 19.

Molecular Weight: Observed\_MW: 51 kDa  
Calculated\_MW: 50 kDa

Gene ID: 989

UniProt: [Q16181](#)

## Application Details

Application Notes: WB 1:1000-1:2000 IHC 1:50-1:200 IF 1:50-1:100

Restrictions: For Research Use only

## Handling

Format: Liquid

Concentration: 1 mg/mL

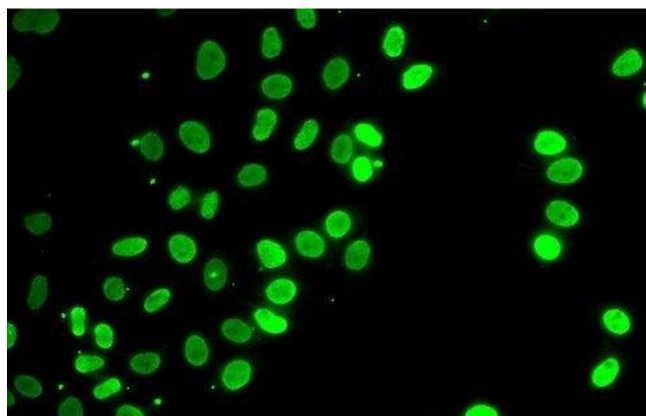
Buffer: PBS with 0.02 % sodium azide, 50 % glycerol, pH 7.3

Preservative: Sodium azide

Precaution of Use: This product contains Sodium azide: a POISONOUS AND HAZARDOUS SUBSTANCE which should be handled by trained staff only.

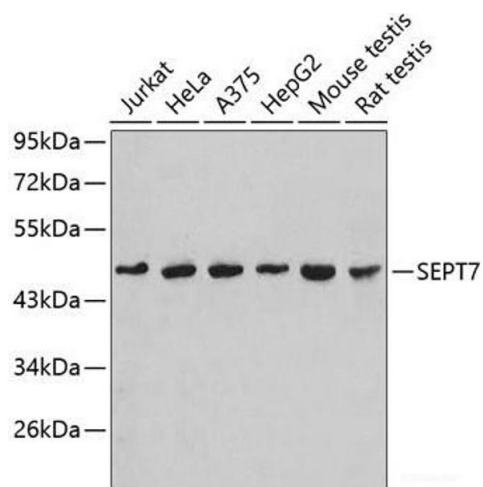
Storage: -20 °C

Storage Comment: Store at -20°C. Avoid freeze / thaw cycles.



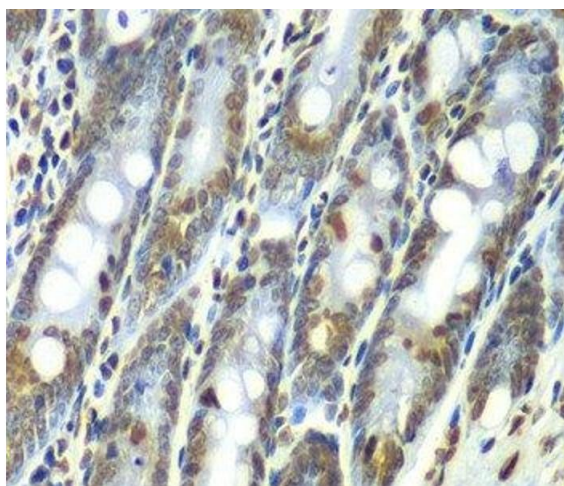
#### Immunofluorescence

**Image 1.** Immunofluorescence analysis of HeLa cells using SEPT7 Polyclonal Antibody



#### Western Blotting

**Image 2.** Western blot analysis of extracts of various cell lines using SEPT7 Polyclonal Antibody.



#### Immunohistochemistry (Paraffin-embedded Sections)

**Image 3.** Immunohistochemistry of paraffin-embedded Rat Intestine using SEPT7 Polyclonal Antibody at dilution of 1:100 (40x lens).

Please check the [product details page](#) for more images. Overall 5 images are available for ABIN7260851.