

Datasheet for ABIN7260857

anti-CLCNKA antibody[Go to Product page](#)**1** Image

Overview

Quantity:	200 µL
Target:	CLCNKA
Reactivity:	Human, Mouse
Host:	Rabbit
Clonality:	Polyclonal
Conjugate:	This CLCNKA antibody is un-conjugated
Application:	Western Blotting (WB)

Product Details

Immunogen:	Recombinant fusion protein of human CLCNKA (NP_001244068.1).
Isotype:	IgG
Characteristics:	Polyclonal Antibody
Purification:	Affinity purification

Target Details

Target:	CLCNKA
Alternative Name:	CLCNKA (CLCNKA Products)
Background:	This gene is a member of the CLC family of voltage-gated chloride channels. The encoded protein is predicted to have 12 transmembrane domains, and requires a beta subunit called barttin to form a functional channel. It is thought to function in salt reabsorption in the kidney and potassium recycling in the inner ear. The gene is highly similar to CLCNKB, which is located

Target Details

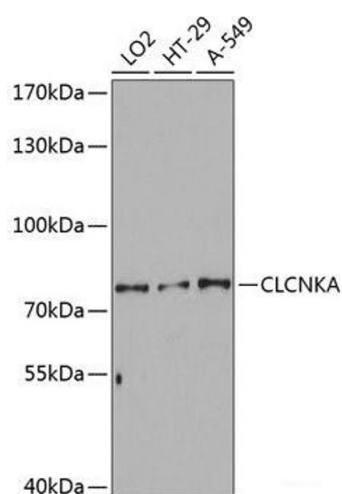
	10 kb downstream from this gene. Multiple transcript variants encoding different isoforms have been found for this gene.
Molecular Weight:	Observed_MW: 75 kDa Calculated_MW: 70 kDa/75 kDa
Gene ID:	1187
UniProt:	P51800
Pathways:	Response to Water Deprivation

Application Details

Application Notes:	WB 1:500-1:2000
Restrictions:	For Research Use only

Handling

Format:	Liquid
Concentration:	1 mg/mL
Buffer:	PBS with 0.02 % sodium azide, 50 % glycerol, pH 7.3
Preservative:	Sodium azide
Precaution of Use:	This product contains Sodium azide: a POISONOUS AND HAZARDOUS SUBSTANCE which should be handled by trained staff only.
Storage:	-20 °C
Storage Comment:	Store at -20°C. Avoid freeze / thaw cycles.



Western Blotting

Image 1. Western blot analysis of extracts of various cell lines using CLCNKA Polyclonal Antibody at dilution of 1:3000.