

Datasheet for ABIN7260871

anti-DACH1 antibody**1** Image[Go to Product page](#)

Overview

Quantity:	200 µL
Target:	DACH1
Reactivity:	Human, Mouse, Rat
Host:	Rabbit
Clonality:	Polyclonal
Conjugate:	This DACH1 antibody is un-conjugated
Application:	Immunohistochemistry (IHC)

Product Details

Immunogen:	Recombinant fusion protein of human DACH1 (NP_542937.2).
Isotype:	IgG
Characteristics:	Polyclonal Antibody
Purification:	Affinity purification

Target Details

Target:	DACH1
Alternative Name:	DACH1 (DACH1 Products)
Background:	This gene encodes a chromatin-associated protein that associates with other DNA-binding transcription factors to regulate gene expression and cell fate determination during development. The protein contains a Ski domain that is highly conserved from Drosophila to human. Expression of this gene is lost in some forms of metastatic cancer, and is correlated

Target Details

with poor prognosis. Multiple transcript variants encoding different isoforms have been found for this gene.

Gene ID: 1602

UniProt: [Q9UI36](#)

Pathways: [Feeding Behaviour](#)

Application Details

Application Notes: IHC 1:20-1:200

Restrictions: For Research Use only

Handling

Format: Liquid

Concentration: 1 mg/mL

Buffer: PBS with 0.02 % sodium azide, 50 % glycerol, pH 7.3

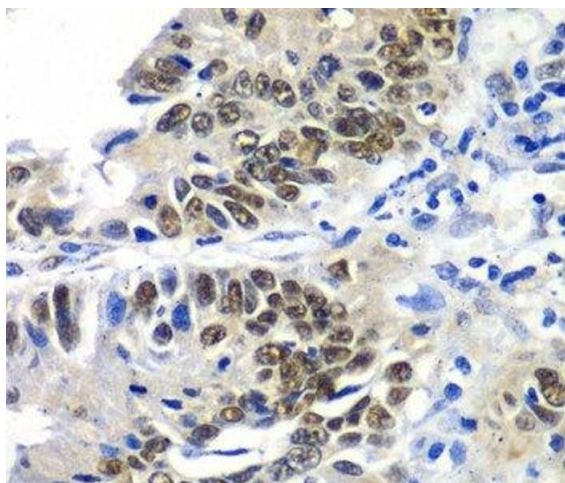
Preservative: Sodium azide

Precaution of Use: This product contains Sodium azide: a POISONOUS AND HAZARDOUS SUBSTANCE which should be handled by trained staff only.

Storage: -20 °C

Storage Comment: Store at -20°C. Avoid freeze / thaw cycles.

Images



Immunohistochemistry (Paraffin-embedded Sections)

Image 1. Immunohistochemistry of paraffin-embedded Human colon carcinoma using DACH1 Polyclonal Antibody at dilution of 1:100 (40x lens).