



Datasheet for ABIN7260875

## anti-DDB1 antibody



[Go to Product page](#)

### 1 Image

#### Overview

Quantity:	200 µL
Target:	DDB1
Reactivity:	Human, Mouse, Rat
Host:	Rabbit
Clonality:	Polyclonal
Conjugate:	This DDB1 antibody is un-conjugated
Application:	Western Blotting (WB)

#### Product Details

Immunogen:	A synthetic peptide of human DDB1 (NP_001914.3).
Isotype:	IgG
Characteristics:	Polyclonal Antibody
Purification:	Affinity purification

#### Target Details

Target:	DDB1
Alternative Name:	DDB1 ( <a href="#">DDB1 Products</a> )
Background:	The protein encoded by this gene is the large subunit (p127) of the heterodimeric DNA damage-binding (DDB) complex while another protein (p48) forms the small subunit. This protein complex functions in nucleotide-excision repair and binds to DNA following UV damage. Defective activity of this complex causes the repair defect in patients with xeroderma

## Target Details

---

pigmentosum complementation group E (XPE) - an autosomal recessive disorder characterized by photosensitivity and early onset of carcinomas. However, it remains for mutation analysis to demonstrate whether the defect in XPE patients is in this gene or the gene encoding the small subunit. In addition, Best vitelliform muscular dystrophy is mapped to the same region as this gene on 11q, but no sequence alternations of this gene are demonstrated in Best disease patients. The protein encoded by this gene also functions as an adaptor molecule for the cullin 4 (CUL4) ubiquitin E3 ligase complex by facilitating the binding of substrates to this complex and the ubiquitination of proteins.

---

Molecular Weight: Observed\_MW: 127 kDa  
Calculated\_MW: 50 kDa/126 kDa

---

Gene ID: 1642

---

UniProt: [Q16531](#)

---

Pathways: [DNA Damage Repair](#)

## Application Details

---

---

Application Notes: WB 1:500-1:2000

---

Restrictions: For Research Use only

## Handling

---

---

Format: Liquid

---

Concentration: 1 mg/mL

---

Buffer: PBS with 0.02 % sodium azide, 50 % glycerol, pH 7.3

---

Preservative: Sodium azide

---

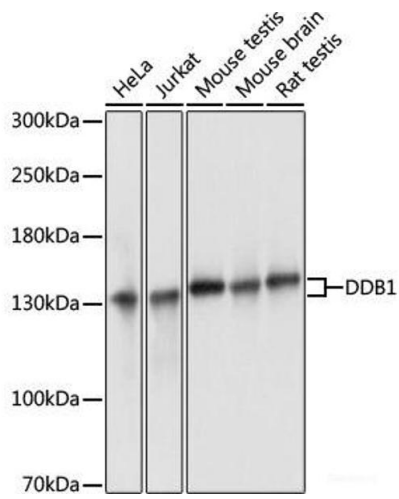
Precaution of Use: This product contains Sodium azide: a POISONOUS AND HAZARDOUS SUBSTANCE which should be handled by trained staff only.

---

Storage: -20 °C

---

Storage Comment: Store at -20°C. Avoid freeze / thaw cycles.



### Western Blotting

**Image 1.** Western blot analysis of extracts of various cell lines using DDB1 Polyclonal Antibody at dilution of 1:3000.