



Datasheet for ABIN7260883
anti-ENO3 antibody



[Go to Product page](#)

2 Images

Overview

Quantity:	200 µL
Target:	ENO3
Reactivity:	Human, Mouse, Rat
Host:	Rabbit
Clonality:	Polyclonal
Conjugate:	This ENO3 antibody is un-conjugated
Application:	Western Blotting (WB), Immunohistochemistry (IHC)

Product Details

Immunogen:	Recombinant fusion protein of human ENO3 (NP_001967.3).
Isotype:	IgG
Characteristics:	Polyclonal Antibody
Purification:	Affinity purification

Target Details

Target:	ENO3
Alternative Name:	ENO3 (ENO3 Products)
Background:	This gene encodes one of the three enolase isoenzymes found in mammals. This isoenzyme is found in skeletal muscle cells in the adult where it may play a role in muscle development and regeneration. A switch from alpha enolase to beta enolase occurs in muscle tissue during development in rodents. Mutations in this gene have been associated with glycogen storage disease.

Target Details

Alternatively spliced transcript variants encoding different isoforms have been described.

Molecular Weight: Observed_MW: 47 kDa
Calculated_MW: 42 kDa/44 kDa/46 kDa

Gene ID: 2027

UniProt: [P13929](#)

Application Details

Application Notes: WB 1:1000-1:4000 IHC 1:100-1:200

Restrictions: For Research Use only

Handling

Format: Liquid

Concentration: 1 mg/mL

Buffer: PBS with 0.02 % sodium azide, 50 % glycerol, pH 7.3

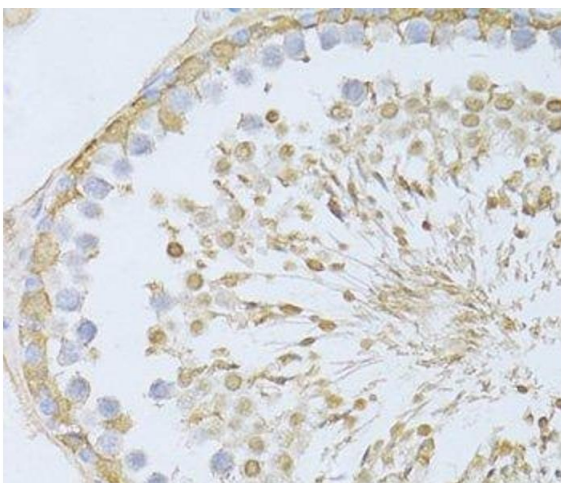
Preservative: Sodium azide

Precaution of Use: This product contains Sodium azide: a POISONOUS AND HAZARDOUS SUBSTANCE which should be handled by trained staff only.

Storage: -20 °C

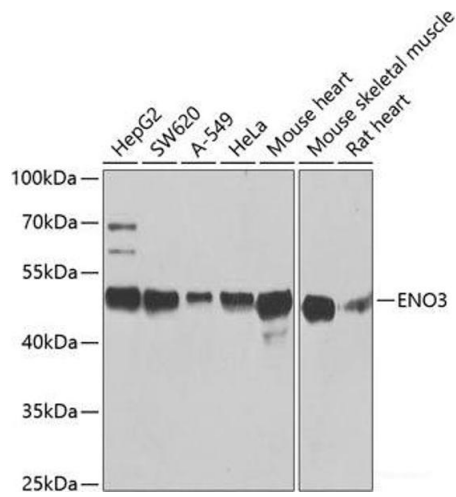
Storage Comment: Store at -20°C. Avoid freeze / thaw cycles.

Images



Immunohistochemistry (Paraffin-embedded Sections)

Image 1. Immunohistochemistry of paraffin-embedded Rat testis using ENO3 Polyclonal Antibody at dilution of 1:100 (40x lens).



Western Blotting

Image 2. Western blot analysis of extracts of various cell lines using ENO3 Polyclonal Antibody at dilution of 1:1000.