



Datasheet for ABIN7260919 anti-LASP1 antibody



[Go to Product page](#)

1 Image

Overview

Quantity:	200 µL
Target:	LASP1
Reactivity:	Human, Mouse
Host:	Rabbit
Clonality:	Polyclonal
Conjugate:	This LASP1 antibody is un-conjugated
Application:	Western Blotting (WB)

Product Details

Immunogen:	Recombinant fusion protein of human LASP1 (NP_006139.1).
Isotype:	IgG
Characteristics:	Polyclonal Antibody
Purification:	Affinity purification

Target Details

Target:	LASP1
Alternative Name:	LASP1 (LASP1 Products)
Background:	This gene encodes a member of a subfamily of LIM proteins, characterized by a LIM motif and a domain of Src homology region 3, and also a member of the nebulin family of actin-binding proteins. The encoded protein is a cAMP and cGMP dependent signaling protein and binds to the actin cytoskeleton at extensions of the cell membrane. The encoded protein has been

Target Details

linked to metastatic breast cancer, hematopoietic tumors such as B-cell lymphomas, and colorectal cancer.

Molecular Weight: Observed_MW: 37 kDa
Calculated_MW: 23 kDa/29 kDa/36 kDa

Gene ID: 3927

UniProt: [Q14847](#)

Application Details

Application Notes: WB 1:1000-1:3000

Restrictions: For Research Use only

Handling

Format: Liquid

Concentration: 1 mg/mL

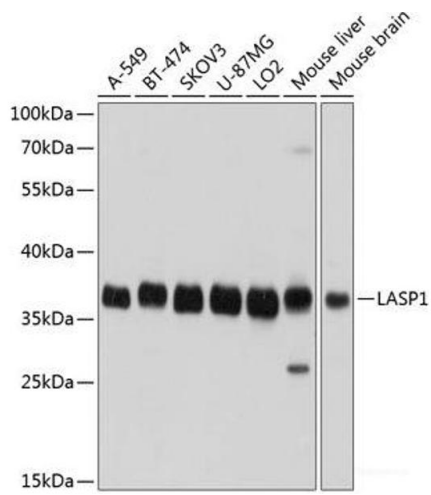
Buffer: PBS with 0.02 % sodium azide, 50 % glycerol, pH 7.3

Preservative: Sodium azide

Precaution of Use: This product contains Sodium azide: a POISONOUS AND HAZARDOUS SUBSTANCE which should be handled by trained staff only.

Storage: -20 °C

Storage Comment: Store at -20°C. Avoid freeze / thaw cycles.



Western Blotting

Image 1. Western blot analysis of extracts of various cell lines using LASP1 Polyclonal Antibody at dilution of 1:1000.