

Datasheet for ABIN7260940

anti-PITX1 antibody[Go to Product page](#)**1** Image

Overview

Quantity:	200 µL
Target:	PITX1
Reactivity:	Rat
Host:	Rabbit
Clonality:	Polyclonal
Conjugate:	This PITX1 antibody is un-conjugated
Application:	Western Blotting (WB)

Product Details

Immunogen:	Recombinant fusion protein of human PITX1 (NP_002644.4).
Isotype:	IgG
Characteristics:	Polyclonal Antibody
Purification:	Affinity purification

Target Details

Target:	PITX1
Alternative Name:	PITX1 (PITX1 Products)
Background:	This gene encodes a member of the RIEG/PITX homeobox family, which is in the bicoid class of homeodomain proteins. Members of this family are involved in organ development and left-right asymmetry. This protein acts as a transcriptional regulator involved in basal and hormone-regulated activity of prolactin.

Target Details

Molecular Weight:	Observed_MW: 40 kDa
	Calculated_MW: 34 kDa
Gene ID:	5307
UniProt:	P78337

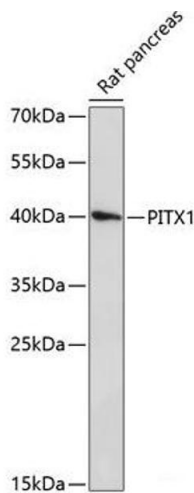
Application Details

Application Notes:	WB 1:500-1:2000
Restrictions:	For Research Use only

Handling

Format:	Liquid
Concentration:	1 mg/mL
Buffer:	PBS with 0.02 % sodium azide, 50 % glycerol, pH 7.3
Preservative:	Sodium azide
Precaution of Use:	This product contains Sodium azide: a POISONOUS AND HAZARDOUS SUBSTANCE which should be handled by trained staff only.
Storage:	-20 °C
Storage Comment:	Store at -20°C. Avoid freeze / thaw cycles.

Images



Western Blotting

Image 1. Western blot analysis of extracts of Rat pancreas using PITX1 Polyclonal Antibody at dilution of 1:3000.