

Datasheet for ABIN7260956

**anti-RNH1 antibody**[Go to Product page](#)**1** Image

## Overview

Quantity:	200 µL
Target:	RNH1
Reactivity:	Human, Rat, Mouse
Host:	Rabbit
Clonality:	Polyclonal
Conjugate:	This RNH1 antibody is un-conjugated
Application:	Western Blotting (WB)

## Product Details

Immunogen:	Recombinant fusion protein of human RNH1 (NP_002930.2).
Isotype:	IgG
Characteristics:	Polyclonal Antibody
Purification:	Affinity purification

## Target Details

Target:	RNH1
Alternative Name:	RNH1 ( <a href="#">RNH1 Products</a> )
Background:	Placental ribonuclease inhibitor (PRI) is a member of a family of proteinaceous cytoplasmic RNase inhibitors that occur in many tissues and bind to both intracellular and extracellular RNases (summarized by Lee et al., 1988 [PubMed 3219362]). In addition to control of intracellular RNases, the inhibitor may have a role in the regulation of angiogenin (MIM 105850).

## Target Details

	Ribonuclease inhibitor, of 50,000 Da, binds to ribonucleases and holds them in a latent form.
Molecular Weight:	Observed_MW: 43 kDa Calculated_MW: 49 kDa
Gene ID:	6050
UniProt:	<a href="#">P13489</a>

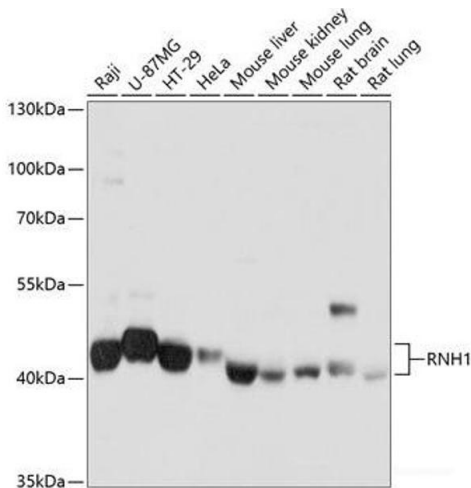
## Application Details

Application Notes:	WB 1:1000-1:2000
Restrictions:	For Research Use only

## Handling

Format:	Liquid
Concentration:	1 mg/mL
Buffer:	PBS with 0.02 % sodium azide, 50 % glycerol, pH 7.3
Preservative:	Sodium azide
Precaution of Use:	This product contains Sodium azide: a POISONOUS AND HAZARDOUS SUBSTANCE which should be handled by trained staff only.
Storage:	-20 °C
Storage Comment:	Store at -20°C. Avoid freeze / thaw cycles.

## Images



### Western Blotting

**Image 1.** Western blot analysis of extracts of various cell lines using RNH1 Polyclonal Antibody at dilution of 1:1000.