



[Go to Product page](#)

Datasheet for ABIN7260986
anti-DNALI1 antibody

1 Image

Overview

| | |
|--------------|---------------------------------------|
| Quantity: | 200 µL |
| Target: | DNALI1 |
| Reactivity: | Mouse |
| Host: | Rabbit |
| Clonality: | Polyclonal |
| Conjugate: | This DNALI1 antibody is un-conjugated |
| Application: | Western Blotting (WB) |

Product Details

| | |
|------------------|---|
| Immunogen: | Recombinant fusion protein of human DNALI1 (NP_003453.2). |
| Isotype: | IgG |
| Characteristics: | Polyclonal Antibody |
| Purification: | Affinity purification |

Target Details

| | |
|-------------------|---|
| Target: | DNALI1 |
| Alternative Name: | DNALI1 (DNALI1 Products) |
| Background: | This gene is the human homolog of the Chlamydomonas inner dynein arm gene, p28. The precise function of this gene is not known, however, it is a potential candidate for immotile cilia syndrome (ICS). Ultrastructural defects of the inner dynein arms are seen in patients with ICS. Immotile mutant strains of Chlamydomonas, a biflagellated algae, exhibit similar defects. |

Target Details

| | |
|-------------------|---|
| Molecular Weight: | Observed_MW: 36 kDa Calculated_MW: 15 kDa/29 kDa |
| Gene ID: | 7802 |
| UniProt: | 014645 |

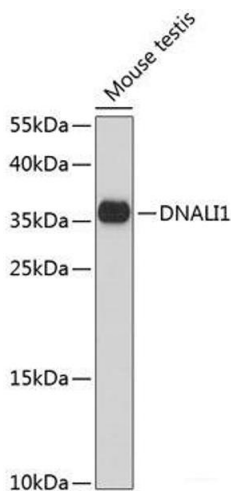
Application Details

| | |
|--------------------|-----------------------|
| Application Notes: | WB 1:500-1:2000 |
| Restrictions: | For Research Use only |

Handling

| | |
|--------------------|--|
| Format: | Liquid |
| Concentration: | 1 mg/mL |
| Buffer: | PBS with 0.02 % sodium azide, 50 % glycerol, pH 7.3 |
| Preservative: | Sodium azide |
| Precaution of Use: | This product contains Sodium azide: a POISONOUS AND HAZARDOUS SUBSTANCE which should be handled by trained staff only. |
| Storage: | -20 °C |
| Storage Comment: | Store at -20°C. Avoid freeze / thaw cycles. |

Images



Western Blotting

Image 1. Western blot analysis of extracts of Mouse testis using DNALI1 Polyclonal Antibody at dilution of 1:1000.