

Datasheet for ABIN7261014

anti-FXR2 antibody**1** Image[Go to Product page](#)

Overview

Quantity:	200 µL
Target:	FXR2
Reactivity:	Human, Mouse
Host:	Rabbit
Clonality:	Polyclonal
Conjugate:	This FXR2 antibody is un-conjugated
Application:	Immunofluorescence (IF)

Product Details

Immunogen:	A synthetic peptide of human FXR2 (NP_004851.2).
Isotype:	IgG
Characteristics:	Polyclonal Antibody
Purification:	Affinity purification

Target Details

Target:	FXR2
Alternative Name:	FXR2 (FXR2 Products)
Background:	The protein encoded by this gene is a RNA binding protein containing two KH domains and one RCG box, which is similar to FMRP and FXR1. It associates with polyribosomes, predominantly with 60S large ribosomal subunits. This encoded protein may self-associate or interact with FMRP and FXR1. It may have a role in the development of fragile X mental retardation

Target Details

syndrome.

Gene ID: 9513

UniProt: [P51116](#)

Application Details

Application Notes: IF 1:50-1:200

Restrictions: For Research Use only

Handling

Format: Liquid

Concentration: 1 mg/mL

Buffer: PBS with 0.02 % sodium azide, 50 % glycerol, pH 7.3

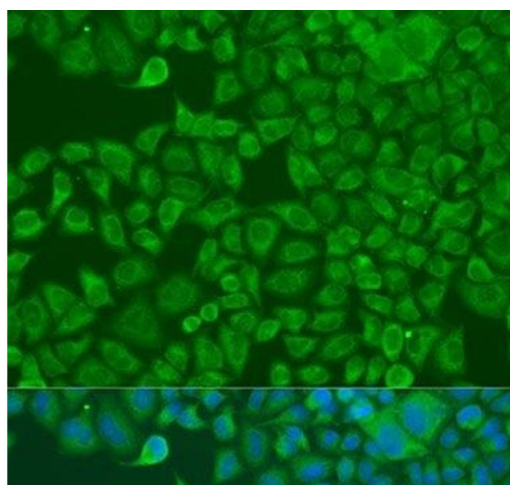
Preservative: Sodium azide

Precaution of Use: This product contains Sodium azide: a POISONOUS AND HAZARDOUS SUBSTANCE which should be handled by trained staff only.

Storage: -20 °C

Storage Comment: Store at -20°C. Avoid freeze / thaw cycles.

Images



Immunofluorescence

Image 1. Immunofluorescence analysis of U2OS cells using FXR2 Polyclonal Antibody at dilution of 1:100. Blue: DAPI for nuclear staining.