

Datasheet for ABIN7261068

**anti-SLC38A3 antibody**[Go to Product page](#)**1** Image

## Overview

Quantity:	200 µL
Target:	SLC38A3
Reactivity:	Human, Mouse, Rat
Host:	Rabbit
Clonality:	Polyclonal
Conjugate:	This SLC38A3 antibody is un-conjugated
Application:	Western Blotting (WB)

## Product Details

Immunogen:	Recombinant fusion protein of human SLC38A3 (NP_006832.1).
Isotype:	IgG
Characteristics:	Polyclonal Antibody
Purification:	Affinity purification

## Target Details

Target:	SLC38A3
Alternative Name:	SLC38A3 ( <a href="#">SLC38A3 Products</a> )
Background:	SLC38A3 (Solute Carrier Family 38 Member 3) is a Protein Coding gene. Diseases associated with SLC38A3 include Dissociative Disorder and Sarcocystosis. Among its related pathways are Transport of glucose and other sugars, bile salts and organic acids, metal ions and amine compounds and Circadian entrainment. Gene Ontology (GO) annotations related to this gene

## Target Details

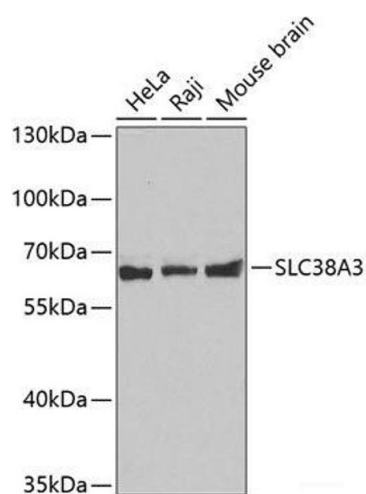
	include symporter activity and L-alanine transmembrane transporter activity. An important paralog of this gene is SLC38A5.
Molecular Weight:	Observed_MW: 60 kDa Calculated_MW: 55 kDa
Gene ID:	10991
UniProt:	<a href="#">Q99624</a>

## Application Details

Application Notes:	WB 1:500-1:2000
Restrictions:	For Research Use only

## Handling

Format:	Liquid
Concentration:	1 mg/mL
Buffer:	PBS with 0.02 % sodium azide, 50 % glycerol, pH 7.3
Preservative:	Sodium azide
Precaution of Use:	This product contains Sodium azide: a POISONOUS AND HAZARDOUS SUBSTANCE which should be handled by trained staff only.
Storage:	-20 °C
Storage Comment:	Store at -20°C. Avoid freeze / thaw cycles.



Western Blotting

**Image 1.** Western blot analysis of extracts of various cell lines using SLC38A3 Polyclonal Antibody.