



[Go to Product page](#)

Datasheet for ABIN7261101

anti-MOBKL3 antibody

3 Images

Overview

Quantity:	200 µL
Target:	MOBKL3
Reactivity:	Human, Mouse, Rat
Host:	Rabbit
Clonality:	Polyclonal
Conjugate:	This MOBKL3 antibody is un-conjugated
Application:	Western Blotting (WB), Immunohistochemistry (IHC)

Product Details

Immunogen:	Recombinant fusion protein of human MOB4 (NP_056202.2).
Isotype:	IgG
Characteristics:	Polyclonal Antibody
Purification:	Affinity purification

Target Details

Target:	MOBKL3
Alternative Name:	MOB4 (MOBKL3 Products)
Background:	This gene was identified based on its similarity with the mouse counterpart. Studies of the mouse counterpart suggest that the expression of this gene may be regulated during oocyte maturation and preimplantation following zygotic gene activation. Alternatively spliced transcript variants encoding distinct isoforms have been observed. Naturally occurring read-

Target Details

through transcription occurs between this locus and the neighboring locus HSPE1.

Molecular Weight: Observed_MW: 26 kDa
Calculated_MW: 22 kDa/23 kDa/26 kDa

Gene ID: 25843

UniProt: [Q9Y3A3](#)

Application Details

Application Notes: WB 1:500-1:2000 IHC 1:50-1:100

Restrictions: For Research Use only

Handling

Format: Liquid

Concentration: 1 mg/mL

Buffer: PBS with 0.02 % sodium azide, 50 % glycerol, pH 7.3

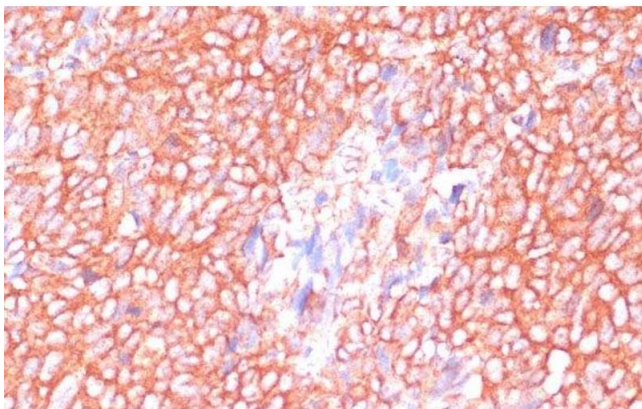
Preservative: Sodium azide

Precaution of Use: This product contains Sodium azide: a POISONOUS AND HAZARDOUS SUBSTANCE which should be handled by trained staff only.

Storage: -20 °C

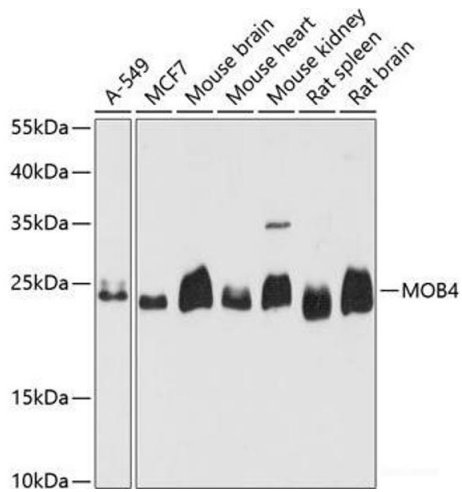
Storage Comment: Store at -20°C. Avoid freeze / thaw cycles.

Images



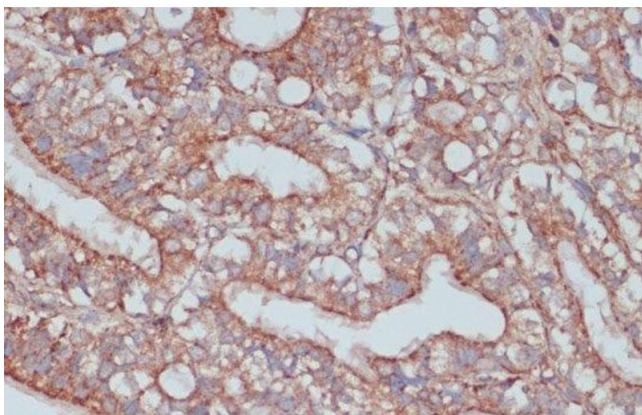
Immunohistochemistry (Paraffin-embedded Sections)

Image 1. Immunohistochemistry of paraffin-embedded Human oophoroma using MOB4 Polyclonal Antibody at dilution of 1:100 (40x lens).



Western Blotting

Image 2. Western blot analysis of extracts of various cell lines using MOB4 Polyclonal Antibody at dilution of 1:3000.



Immunohistochemistry (Paraffin-embedded Sections)

Image 3. Immunohistochemistry of paraffin-embedded Rat ovary using MOB4 Polyclonal Antibody at dilution of 1:100 (40x lens).