

Datasheet for ABIN7261115

anti-MRPS28 antibody**3** Images[Go to Product page](#)

Overview

Quantity:	200 µL
Target:	MRPS28
Reactivity:	Human, Mouse
Host:	Rabbit
Clonality:	Polyclonal
Conjugate:	This MRPS28 antibody is un-conjugated
Application:	Western Blotting (WB), Immunofluorescence (IF)

Product Details

Immunogen:	Recombinant fusion protein of human MRPS28 (NP_054737.1).
Isotype:	IgG
Characteristics:	Polyclonal Antibody
Purification:	Affinity purification

Target Details

Target:	MRPS28
Alternative Name:	MRPS28 (MRPS28 Products)
Background:	Mammalian mitochondrial ribosomal proteins are encoded by nuclear genes and help in protein synthesis within the mitochondrion. Mitochondrial ribosomes (mitoribosomes) consist of a small 28S subunit and a large 39S subunit. They have an estimated 75 % protein to rRNA composition compared to prokaryotic ribosomes, where this ratio is reversed. Another

Target Details

difference between mammalian mitoribosomes and prokaryotic ribosomes is that the latter contain a 5S rRNA. Among different species, the proteins comprising the mitoribosome differ greatly in sequence, and sometimes in biochemical properties, which prevents easy recognition by sequence homology. This gene encodes a 28S subunit protein that has been called mitochondrial ribosomal protein S35 in the literature.

Molecular Weight: Observed_MW: 21 kDa
Calculated_MW: 20 kDa

Gene ID: 28957

UniProt: [Q9Y2Q9](#)

Application Details

Application Notes: WB 1:500-1:1000 IF 1:20-1:100

Restrictions: For Research Use only

Handling

Format: Liquid

Concentration: 1 mg/mL

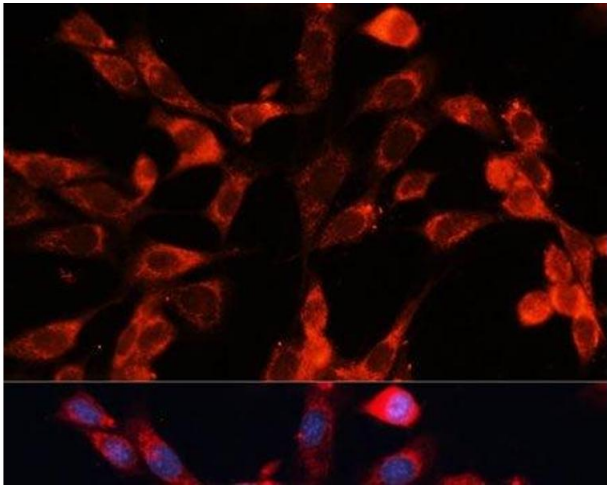
Buffer: PBS with 0.02 % sodium azide, 50 % glycerol, pH 7.3

Preservative: Sodium azide

Precaution of Use: This product contains Sodium azide: a POISONOUS AND HAZARDOUS SUBSTANCE which should be handled by trained staff only.

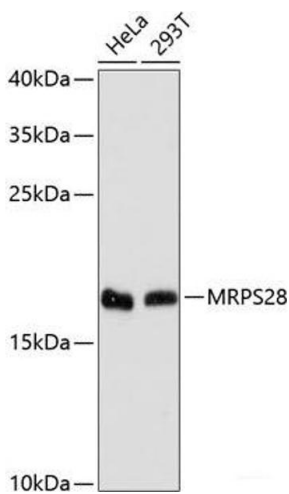
Storage: -20 °C

Storage Comment: Store at -20°C. Avoid freeze / thaw cycles.



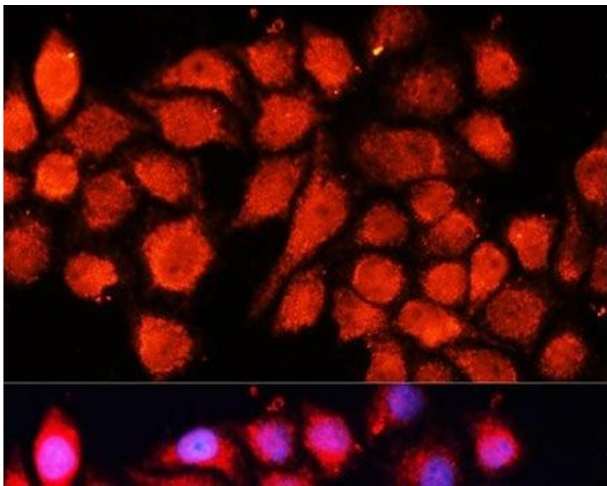
Immunofluorescence

Image 1. Immunofluorescence analysis of NIH-3T3 cells using MRPS28 Polyclonal Antibody at dilution of 1:100 (40x lens). Blue: DAPI for nuclear staining.



Western Blotting

Image 2. Western blot analysis of extracts of various cell lines using MRPS28 Polyclonal Antibody at dilution of 1:3000.



Immunofluorescence

Image 3. Immunofluorescence analysis of HeLa cells using MRPS28 Polyclonal Antibody at dilution of 1:100 (40x lens). Blue: DAPI for nuclear staining.