

Datasheet for ABIN7261131

anti-RhoF antibody**1** Image[Go to Product page](#)

Overview

Quantity:	200 µL
Target:	RhoF (RHOF)
Reactivity:	Human, Mouse
Host:	Rabbit
Clonality:	Polyclonal
Conjugate:	This RhoF antibody is un-conjugated
Application:	Western Blotting (WB)

Product Details

Immunogen:	Recombinant fusion protein of human RHOF (NP_061907.2).
Isotype:	IgG
Characteristics:	Polyclonal Antibody
Purification:	Affinity purification

Target Details

Target:	RhoF (RHOF)
Alternative Name:	RHOF (RHOF Products)
Background:	<p>RHOF (Ras Homolog Family Member F, Filopodia Associated) is a Protein Coding gene.</p> <p>Diseases associated with RHOF include Deafness, Autosomal Recessive 104 and Ascaridiasis.</p> <p>Among its related pathways are Signaling by GPCR and Innate Immune System. Gene Ontology (GO) annotations related to this gene include GTP binding and GTPase activity. An important</p>

Target Details

	paralog of this gene is RHOD.
Molecular Weight:	Observed_MW: 27 kDa Calculated_MW: 18 kDa/23 kDa
Gene ID:	54509
UniProt:	Q9HBH0

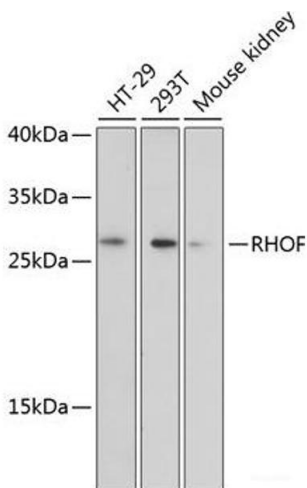
Application Details

Application Notes:	WB 1:500-1:2000
Restrictions:	For Research Use only

Handling

Format:	Liquid
Concentration:	1 mg/mL
Buffer:	PBS with 0.02 % sodium azide, 50 % glycerol, pH 7.3
Preservative:	Sodium azide
Precaution of Use:	This product contains Sodium azide: a POISONOUS AND HAZARDOUS SUBSTANCE which should be handled by trained staff only.
Storage:	-20 °C
Storage Comment:	Store at -20°C. Avoid freeze / thaw cycles.

Images



Western Blotting

Image 1. Western blot analysis of extracts of various cell lines using RHO Polyclonal Antibody at dilution of 1:3000.