

Datasheet for ABIN7261199

anti-RASSF6 antibody[Go to Product page](#)**1** Image

Overview

Quantity:	200 µL
Target:	RASSF6
Reactivity:	Mouse, Rat
Host:	Rabbit
Clonality:	Polyclonal
Conjugate:	This RASSF6 antibody is un-conjugated
Application:	Western Blotting (WB)

Product Details

Immunogen:	Recombinant fusion protein of human RASSF6 (NP_001257320.1).
Isotype:	IgG
Characteristics:	Polyclonal Antibody
Purification:	Affinity purification

Target Details

Target:	RASSF6
Alternative Name:	RASSF6 (RASSF6 Products)
Background:	This gene encodes a member of the Ras-association domain family (RASSF). Members of this family form the core of a highly conserved tumor suppressor network, the Salvador-Warts-Hippo (SWH) pathway. The protein encoded by this gene is a Ras effector protein that induces apoptosis. A genomic region containing this gene has been linked to susceptibility to viral

Target Details

bronchiolitis. Alternative splicing results in multiple transcript variants and protein isoforms.

Molecular Weight:	Observed_MW: 54 kDa
	Calculated_MW: 35 kDa/37 kDa/39 kDa/43 kDa
Gene ID:	166824
UniProt:	Q6ZTQ3

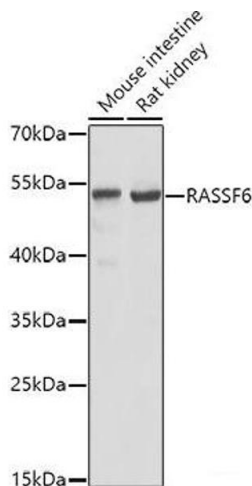
Application Details

Application Notes:	WB 1:500-1:2000
Restrictions:	For Research Use only

Handling

Format:	Liquid
Concentration:	1 mg/mL
Buffer:	PBS with 0.02 % sodium azide, 50 % glycerol, pH 7.3
Preservative:	Sodium azide
Precaution of Use:	This product contains Sodium azide: a POISONOUS AND HAZARDOUS SUBSTANCE which should be handled by trained staff only.
Storage:	-20 °C
Storage Comment:	Store at -20°C. Avoid freeze / thaw cycles.

Images



Western Blotting

Image 1. Western blot analysis of extracts of various cell lines using RASSF6 Polyclonal Antibody at dilution of 1:1000.