

Datasheet for ABIN7261215

anti-SPTBN1 antibody[Go to Product page](#)**1** Image

Overview

Quantity:	200 µL
Target:	SPTBN1
Reactivity:	Human, Mouse
Host:	Rabbit
Clonality:	Polyclonal
Conjugate:	This SPTBN1 antibody is un-conjugated
Application:	Western Blotting (WB)

Product Details

Immunogen:	Recombinant fusion protein of human SPTBN1 (NP_003119.2).
Isotype:	IgG
Characteristics:	Polyclonal Antibody
Purification:	Affinity purification

Target Details

Target:	SPTBN1
Alternative Name:	SPTBN1 (SPTBN1 Products)
Background:	Spectrin is an actin crosslinking and molecular scaffold protein that links the plasma membrane to the actin cytoskeleton, and functions in the determination of cell shape, arrangement of transmembrane proteins, and organization of organelles. It is composed of two antiparallel dimers of alpha- and beta- subunits. This gene is one member of a family of beta-

Target Details

spectrin genes. The encoded protein contains an N-terminal actin-binding domain, and 17 spectrin repeats which are involved in dimer formation. Multiple transcript variants encoding different isoforms have been found for this gene.

Molecular Weight: Observed_MW: 275 kDa
Calculated_MW: 251 kDa/253 kDa/274 kDa

Gene ID: 6711

UniProt: [Q01082](#)

Pathways: [Regulation of Actin Filament Polymerization](#), [Protein targeting to Nucleus](#)

Application Details

Application Notes: WB 1:1000-1:3000

Restrictions: For Research Use only

Handling

Format: Liquid

Concentration: 1 mg/mL

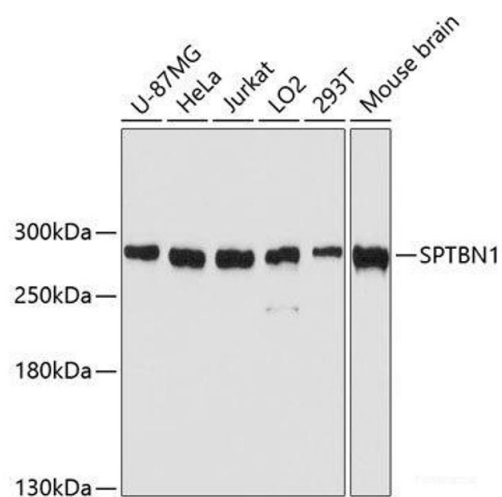
Buffer: PBS with 0.02 % sodium azide, 50 % glycerol, pH 7.3

Preservative: Sodium azide

Precaution of Use: This product contains Sodium azide: a POISONOUS AND HAZARDOUS SUBSTANCE which should be handled by trained staff only.

Storage: -20 °C

Storage Comment: Store at -20°C. Avoid freeze / thaw cycles.



Western Blotting

Image 1. Western blot analysis of extracts of various cell lines using SPTBN1 Polyclonal Antibody at dilution of 1:3000.