

Datasheet for ABIN7261217

**anti-SETD8 antibody**[Go to Product page](#)**1** Image

## Overview

Quantity:	200 µL
Target:	SETD8
Reactivity:	Human, Mouse, Rat
Host:	Rabbit
Clonality:	Polyclonal
Conjugate:	This SETD8 antibody is un-conjugated
Application:	Western Blotting (WB)

## Product Details

Immunogen:	Recombinant protein of human SETD8
Isotype:	IgG
Characteristics:	Polyclonal Antibody
Purification:	Affinity purification

## Target Details

Target:	SETD8
Alternative Name:	SETD8 ( <a href="#">SETD8 Products</a> )
Background:	The protein encoded by this gene is a protein-lysine N-methyltransferase that can monomethylate Lys-20 of histone H4 to effect transcriptional repression of some genes. The encoded protein is required for cell proliferation and plays a role in chromatin condensation.

## Target Details

Molecular Weight:	Observed_MW: 43 kDa
	Calculated_MW: 39 kDa/42 kDa
Gene ID:	387893
UniProt:	<a href="#">Q9NQR1</a>

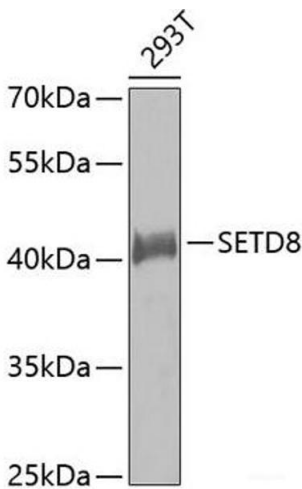
## Application Details

Application Notes:	WB 1:500-1:2000
Restrictions:	For Research Use only

## Handling

Format:	Liquid
Concentration:	1 mg/mL
Buffer:	PBS with 0.02 % sodium azide, 50 % glycerol, pH 7.3
Preservative:	Sodium azide
Precaution of Use:	This product contains Sodium azide: a POISONOUS AND HAZARDOUS SUBSTANCE which should be handled by trained staff only.
Storage:	-20 °C
Storage Comment:	Store at -20°C. Avoid freeze / thaw cycles.

## Images



### Western Blotting

**Image 1.** Western blot analysis of extracts of 293T cells using SETD8 Polyclonal Antibody.