

Datasheet for ABIN7261267

anti-GTF2H2 antibody**2** Images[Go to Product page](#)

Overview

| | |
|--------------|---------------------------------------|
| Quantity: | 200 µL |
| Target: | GTF2H2 |
| Reactivity: | Mouse, Rat |
| Host: | Rabbit |
| Clonality: | Polyclonal |
| Conjugate: | This GTF2H2 antibody is un-conjugated |
| Application: | Immunohistochemistry (IHC) |

Product Details

| | |
|------------------|--|
| Immunogen: | A synthetic peptide of human GTF2H2 (NP_001506.1). |
| Isotype: | IgG |
| Characteristics: | Polyclonal Antibody |
| Purification: | Affinity purification |

Target Details

| | |
|-------------------|---|
| Target: | GTF2H2 |
| Alternative Name: | GTF2H2 (GTF2H2 Products) |
| Background: | This gene is part of a 500 kb inverted duplication on chromosome 5q13. This duplicated region contains at least four genes and repetitive elements which make it prone to rearrangements and deletions. The repetitiveness and complexity of the sequence have also caused difficulty in determining the organization of this genomic region. This gene is within the telomeric copy of |

Target Details

the duplication. Deletion of this gene sometimes accompanies deletion of the neighboring SMN1 gene in spinal muscular atrophy (SMA) patients but it is unclear if deletion of this gene contributes to the SMA phenotype. This gene encodes the 44 kDa subunit of RNA polymerase II transcription initiation factor IIH which is involved in basal transcription and nucleotide excision repair. Transcript variants for this gene have been described, but their full length nature has not been determined. A second copy of this gene within the centromeric copy of the duplication has been described in the literature. It is reported to be different by either two or four base pairs, however, no sequence data is currently available for the centromeric copy of the gene.

Gene ID: 2966

UniProt: [Q13888](#)

Pathways: [Regulation of G-Protein Coupled Receptor Protein Signaling](#)

Application Details

Application Notes: IHC 1:50-1:200

Restrictions: For Research Use only

Handling

Format: Liquid

Concentration: 1 mg/mL

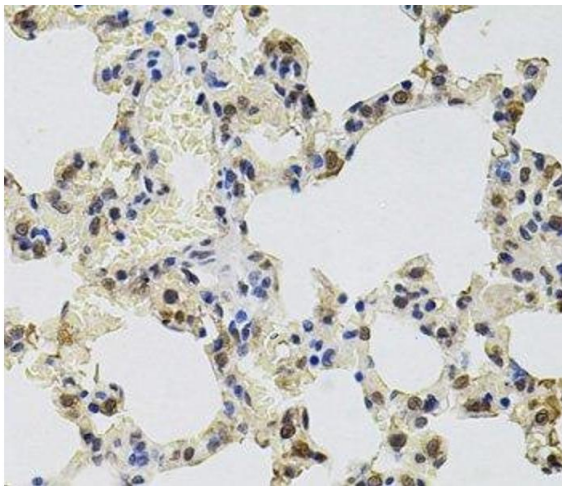
Buffer: PBS with 0.02 % sodium azide, 50 % glycerol, pH 7.3

Preservative: Sodium azide

Precaution of Use: This product contains Sodium azide: a POISONOUS AND HAZARDOUS SUBSTANCE which should be handled by trained staff only.

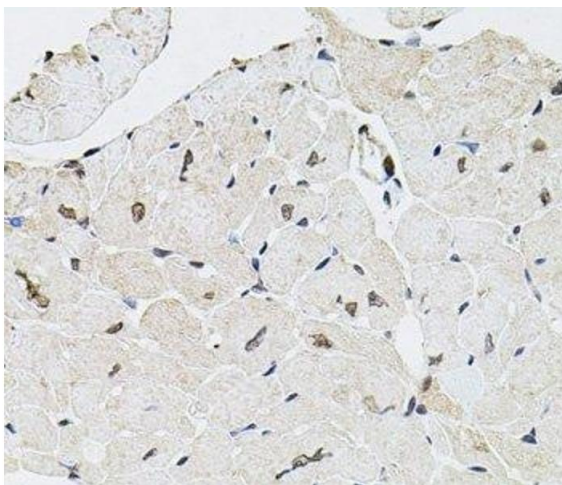
Storage: -20 °C

Storage Comment: Store at -20°C. Avoid freeze / thaw cycles.



Immunohistochemistry (Paraffin-embedded Sections)

Image 1. Immunohistochemistry of paraffin-embedded Rat lung using GTF2H2 Polyclonal Antibody at dilution of 1:100 (40x lens).



Immunohistochemistry (Paraffin-embedded Sections)

Image 2. Immunohistochemistry of paraffin-embedded Mouse heart using GTF2H2 Polyclonal Antibody at dilution of 1:100 (40x lens).