

Datasheet for ABIN7261281  
**anti-SERPINE2 antibody**[Go to Product page](#)

## 2 Images

## Overview

Quantity:	200 µL
Target:	SERPINE2
Reactivity:	Mouse
Host:	Rabbit
Clonality:	Polyclonal
Conjugate:	This SERPINE2 antibody is un-conjugated
Application:	Western Blotting (WB), Immunohistochemistry (IHC)

## Product Details

Immunogen:	Recombinant fusion protein of human SERPINE2 (NP_006207.1).
Isotype:	IgG
Characteristics:	Polyclonal Antibody
Purification:	Affinity purification

## Target Details

Target:	SERPINE2
Alternative Name:	SERPINE2 ( <a href="#">SERPINE2 Products</a> )
Background:	This gene encodes a member of the serpin family of proteins, a group of proteins that inhibit serine proteases. Thrombin, urokinase, plasmin and trypsin are among the proteases that this family member can inhibit. This gene is a susceptibility gene for chronic obstructive pulmonary disease and for emphysema. Alternative splicing results in multiple transcript variants.

## Target Details

Molecular Weight: Observed\_MW: 44 kDa  
Calculated\_MW: 44 kDa/45 kDa

Gene ID: 5270

UniProt: [P07093](#)

## Application Details

Application Notes: WB 1:500-1:2000 IHC 1:50-1:200

Restrictions: For Research Use only

## Handling

Format: Liquid

Concentration: 1 mg/mL

Buffer: PBS with 0.02 % sodium azide, 50 % glycerol, pH 7.3

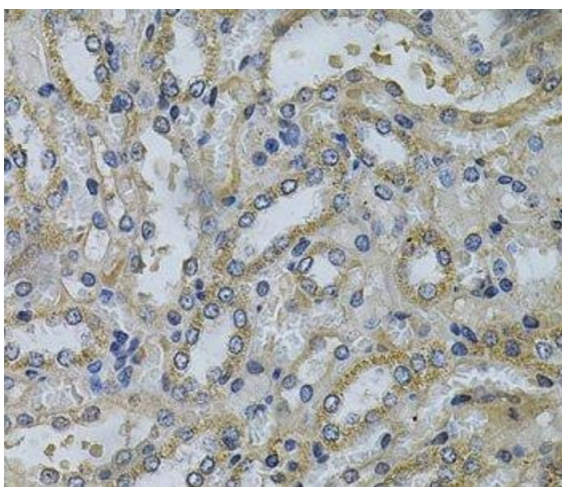
Preservative: Sodium azide

Precaution of Use: This product contains Sodium azide: a POISONOUS AND HAZARDOUS SUBSTANCE which should be handled by trained staff only.

Storage: -20 °C

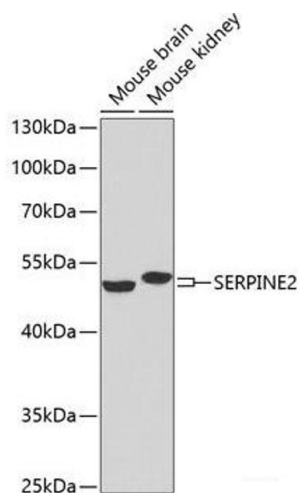
Storage Comment: Store at -20°C. Avoid freeze / thaw cycles.

## Images



### Immunohistochemistry (Paraffin-embedded Sections)

**Image 1.** Immunohistochemistry of paraffin-embedded Mouse kidney using SERPINE2 Polyclonal Antibody at dilution of 1:100 (40x lens).



Western Blotting

**Image 2.** Western blot analysis of extracts of various cell lines using SERPINE2 Polyclonal Antibody at dilution of 1:1000.