



Datasheet for ABIN7261297

anti-LTBR antibody



[Go to Product page](#)

1 Image

Overview

Quantity:	200 µL
Target:	LTBR
Reactivity:	Mouse
Host:	Rabbit
Clonality:	Polyclonal
Conjugate:	This LTBR antibody is un-conjugated
Application:	Western Blotting (WB)

Product Details

Immunogen:	Recombinant fusion protein of human LTBR (NP_002333.1).
Isotype:	IgG
Characteristics:	Polyclonal Antibody
Purification:	Affinity purification

Target Details

Target:	LTBR
Alternative Name:	LTBR (LTBR Products)
Background:	This gene encodes a member of the tumor necrosis factor receptor superfamily. The major ligands of this receptor include lymphotoxin alpha/beta and tumor necrosis factor ligand superfamily member 14. The encoded protein plays a role in signalling during the development of lymphoid and other organs, lipid metabolism, immune response, and programmed cell death.

Target Details

Activity of this receptor has also been linked to carcinogenesis. Alternatively spliced transcript variants encoding multiple isoforms have been observed.

Molecular Weight: Observed_MW: 47 kDa
Calculated_MW: 44 kDa/46 kDa

Gene ID: 4055

UniProt: [P36941](#)

Pathways: [NF-kappaB Signaling](#)

Application Details

Application Notes: WB 1:500-1:2000

Restrictions: For Research Use only

Handling

Format: Liquid

Concentration: 1 mg/mL

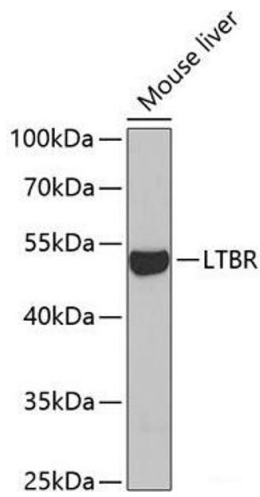
Buffer: PBS with 0.02 % sodium azide, 50 % glycerol, pH 7.3

Preservative: Sodium azide

Precaution of Use: This product contains Sodium azide: a POISONOUS AND HAZARDOUS SUBSTANCE which should be handled by trained staff only.

Storage: -20 °C

Storage Comment: Store at -20°C. Avoid freeze / thaw cycles.



Western Blotting

Image 1. Western blot analysis of extracts of Mouse liver using LTBR Polyclonal Antibody at dilution of 1:1000.