

Datasheet for ABIN7261335

**anti-SCP2 antibody****2** Images[Go to Product page](#)

## Overview

Quantity:	200 µL
Target:	SCP2
Reactivity:	Human, Mouse
Host:	Rabbit
Clonality:	Polyclonal
Conjugate:	This SCP2 antibody is un-conjugated
Application:	Western Blotting (WB), Immunohistochemistry (IHC)

## Product Details

Immunogen:	Recombinant fusion protein of human SCP2 (NP_001007099.1).
Isotype:	IgG
Characteristics:	Polyclonal Antibody
Purification:	Affinity purification

## Target Details

Target:	SCP2
Alternative Name:	SCP2 ( <a href="#">SCP2 Products</a> )
Background:	This gene encodes two proteins: sterol carrier protein X (SCPx) and sterol carrier protein 2 (SCP2), as a result of transcription initiation from 2 independently regulated promoters. The transcript initiated from the proximal promoter encodes the longer SCPx protein, and the transcript initiated from the distal promoter encodes the shorter SCP2 protein, with the 2

## Target Details

proteins sharing a common C-terminus. Evidence suggests that the SCPx protein is a peroxisome-associated thiolase that is involved in the oxidation of branched chain fatty acids, while the SCP2 protein is thought to be an intracellular lipid transfer protein. This gene is highly expressed in organs involved in lipid metabolism, and may play a role in Zellweger syndrome, in which cells are deficient in peroxisomes and have impaired bile acid synthesis. Alternative splicing of this gene produces multiple transcript variants, some encoding different isoforms.

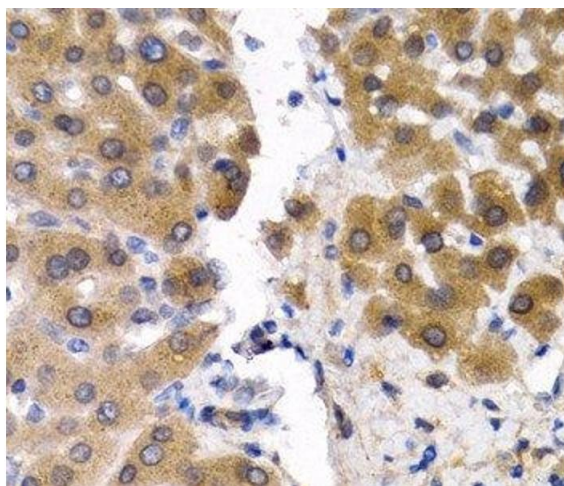
Molecular Weight:	Observed_MW: 59 kDa Calculated_MW: 6 kDa/15 kDa/34 kDa/50 kDa/54 kDa/56 kDa/58 kDa
Gene ID:	6342
UniProt:	<a href="#">P22307</a>
Pathways:	<a href="#">C21-Steroid Hormone Metabolic Process</a> , <a href="#">Monocarboxylic Acid Catabolic Process</a>

## Application Details

Application Notes:	WB 1:500-1:2000 IHC 1:50-1:200
Restrictions:	For Research Use only

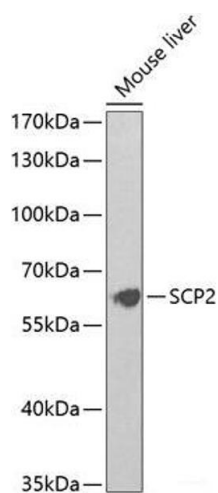
## Handling

Format:	Liquid
Concentration:	1 mg/mL
Buffer:	PBS with 0.02 % sodium azide, 50 % glycerol, pH 7.3
Preservative:	Sodium azide
Precaution of Use:	This product contains Sodium azide: a POISONOUS AND HAZARDOUS SUBSTANCE which should be handled by trained staff only.
Storage:	-20 °C
Storage Comment:	Store at -20°C. Avoid freeze / thaw cycles.



#### Immunohistochemistry (Paraffin-embedded Sections)

**Image 1.** Immunohistochemistry of paraffin-embedded Human liver cancer using SCP2 Polyclonal Antibody at dilution of 1:200 (40x lens).



#### Western Blotting

**Image 2.** Western blot analysis of extracts of Mouse liver using SCP2 Polyclonal Antibody at dilution of 1:1000.