

Datasheet for ABIN7261341

**anti-ADAM9 antibody**

## 3 Images

[Go to Product page](#)

## Overview

Quantity:	200 µL
Target:	ADAM9
Reactivity:	Human, Mouse
Host:	Rabbit
Clonality:	Polyclonal
Conjugate:	This ADAM9 antibody is un-conjugated
Application:	Western Blotting (WB), Immunohistochemistry (IHC), Immunofluorescence (IF)

## Product Details

Immunogen:	Recombinant fusion protein of human ADAM9 (NP_003807.1).
Isotype:	IgG
Characteristics:	Polyclonal Antibody
Purification:	Affinity purification

## Target Details

Target:	ADAM9
Alternative Name:	ADAM9 ( <a href="#">ADAM9 Products</a> )
Background:	This gene encodes a member of the ADAM (a disintegrin and metalloprotease domain) family. Members of this family are membrane-anchored proteins structurally related to snake venom disintegrins, and have been implicated in a variety of biological processes involving cell-cell and cell-matrix interactions, including fertilization, muscle development, and neurogenesis. The

## Target Details

protein encoded by this gene interacts with SH3 domain-containing proteins, binds mitotic arrest deficient 2 beta protein, and is also involved in TPA-induced ectodomain shedding of membrane-anchored heparin-binding EGF-like growth factor. Several alternatively spliced transcript variants have been identified for this gene.

Molecular Weight: Observed\_MW: 100 kDa  
Calculated\_MW: 72 kDa/90 kDa

Gene ID: 8754

UniProt: [Q13443](#)

Pathways: [Cellular Response to Molecule of Bacterial Origin](#), [SARS-CoV-2 Protein Interactome](#)

## Application Details

Application Notes: WB 1:500-1:2000 IHC 1:50-1:200 IF 1:50-1:200

Restrictions: For Research Use only

## Handling

Format: Liquid

Concentration: 1 mg/mL

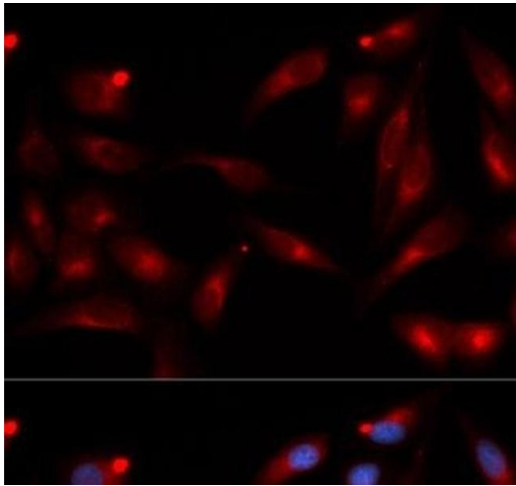
Buffer: PBS with 0.02 % sodium azide, 50 % glycerol, pH 7.3

Preservative: Sodium azide

Precaution of Use: This product contains Sodium azide: a POISONOUS AND HAZARDOUS SUBSTANCE which should be handled by trained staff only.

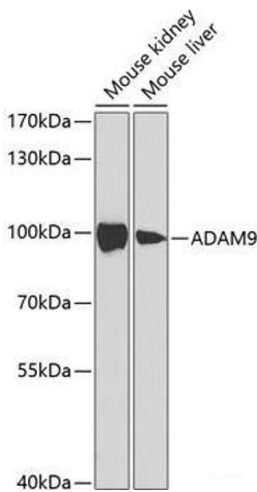
Storage: -20 °C

Storage Comment: Store at -20°C. Avoid freeze / thaw cycles.



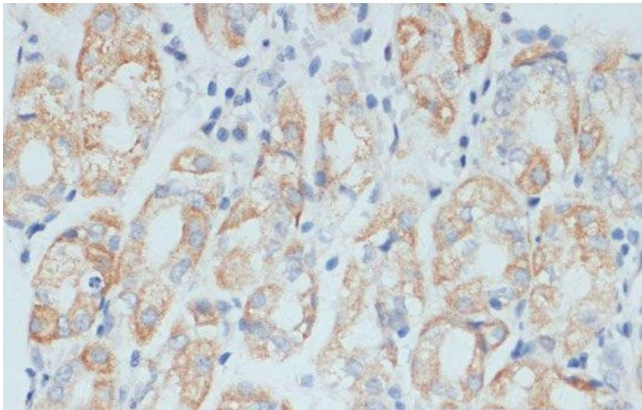
### Immunofluorescence

**Image 1.** Immunofluorescence analysis of U2OS cells using ADAM9 Polyclonal Antibody



### Western Blotting

**Image 2.** Western blot analysis of extracts of various cell lines using ADAM9 Polyclonal Antibody at dilution of 1:1000.



### Immunohistochemistry (Paraffin-embedded Sections)

**Image 3.** Immunohistochemistry of paraffin-embedded Human stomach using ADAM9 Polyclonal Antibody at dilution of 1:100 (40x lens).