

Datasheet for ABIN7261367  
**anti-NPC2 antibody**



[Go to Product page](#)

4 Images

### Overview

Quantity:	200 µL
Target:	NPC2
Reactivity:	Human, Mouse
Host:	Rabbit
Clonality:	Polyclonal
Conjugate:	This NPC2 antibody is un-conjugated
Application:	Western Blotting (WB), Immunohistochemistry (IHC)

### Product Details

Immunogen:	Recombinant fusion protein of human NPC2 (NP_006423.1).
Isotype:	IgG
Characteristics:	Polyclonal Antibody
Purification:	Affinity purification

### Target Details

Target:	NPC2
Alternative Name:	NPC2 ( <a href="#">NPC2 Products</a> )
Background:	This gene encodes a protein containing a lipid recognition domain. The encoded protein may function in regulating the transport of cholesterol through the late endosomal/lysosomal system. Mutations in this gene have been associated with Niemann-Pick disease, type C2 and frontal lobe atrophy.

## Target Details

Molecular Weight: Observed\_MW: 19 kDa  
Calculated\_MW: 13 kDa/16 kDa

Gene ID: 10577

UniProt: [P61916](#)

Pathways: [SARS-CoV-2 Protein Interactome](#)

## Application Details

Application Notes: WB 1:500-1:2000 IHC 1:50-1:200

Restrictions: For Research Use only

## Handling

Format: Liquid

Concentration: 1 mg/mL

Buffer: PBS with 0.02 % sodium azide, 50 % glycerol, pH 7.3

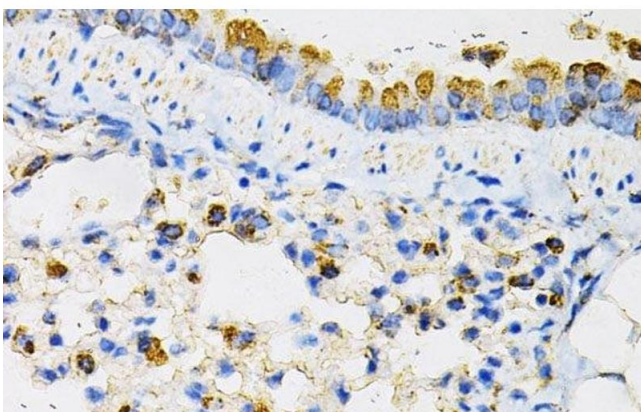
Preservative: Sodium azide

Precaution of Use: This product contains Sodium azide: a POISONOUS AND HAZARDOUS SUBSTANCE which should be handled by trained staff only.

Storage: -20 °C

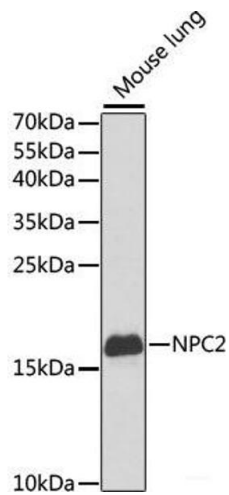
Storage Comment: Store at -20°C. Avoid freeze / thaw cycles.

## Images



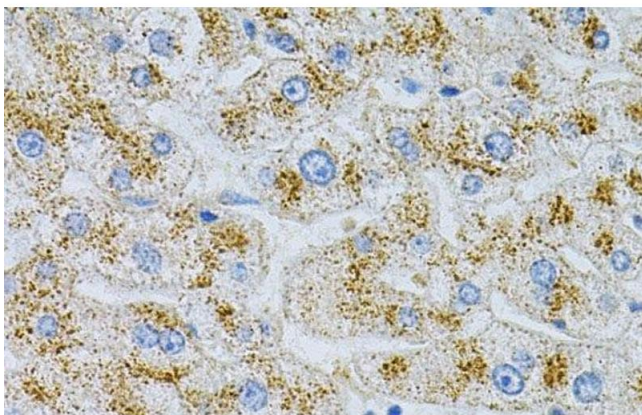
### Immunohistochemistry (Paraffin-embedded Sections)

**Image 1.** Immunohistochemistry of paraffin-embedded Mouse lung using NPC2 Polyclonal Antibody at dilution of 1:100 (40x lens).



### Western Blotting

**Image 2.** Western blot analysis of extracts of Mouse lung using NPC2 Polyclonal Antibody at dilution of 1:1000.



### Immunohistochemistry (Paraffin-embedded Sections)

**Image 3.** Immunohistochemistry of paraffin-embedded Human liver damage using NPC2 Polyclonal Antibody at dilution of 1:100 (40x lens).

Please check the [product details page](#) for more images. Overall 4 images are available for ABIN7261367.