

Datasheet for ABIN7261377

**anti-DP1 antibody**

3 Images

[Go to Product page](#)

## Overview

Quantity:	200 µL
Target:	DP1 (TFDP1)
Reactivity:	Human, Mouse
Host:	Rabbit
Clonality:	Polyclonal
Conjugate:	This DP1 antibody is un-conjugated
Application:	Western Blotting (WB), Immunohistochemistry (IHC)

## Product Details

Immunogen:	Recombinant fusion protein of human TFDP1 (NP_009042.1).
Isotype:	IgG
Characteristics:	Polyclonal Antibody
Purification:	Affinity purification

## Target Details

Target:	DP1 (TFDP1)
Alternative Name:	TFDP1 ( <a href="#">TFDP1 Products</a> )
Background:	This gene encodes a member of a family of transcription factors that heterodimerize with E2F proteins to enhance their DNA-binding activity and promote transcription from E2F target genes. The encoded protein functions as part of this complex to control the transcriptional activity of numerous genes involved in cell cycle progression from G1 to S phase. Alternative

## Target Details

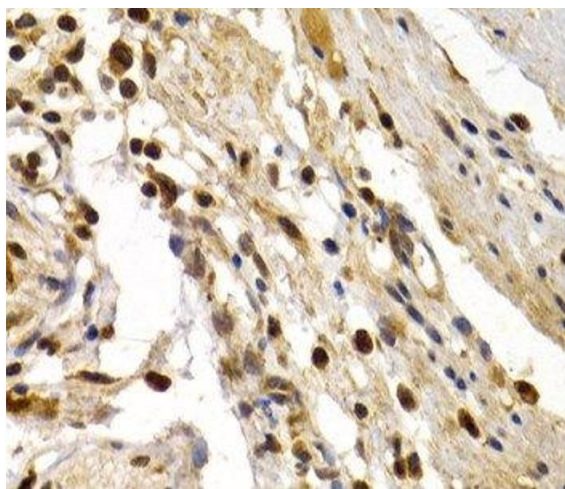
	splicing results in multiple transcript variants. Pseudogenes of this gene are found on chromosomes 1, 15, and X.
Molecular Weight:	Observed_MW: 45 kDa Calculated_MW: 34 kDa/45 kDa
Gene ID:	7027
UniProt:	<a href="#">Q14186</a>
Pathways:	<a href="#">Cell Division Cycle, Mitotic G1-G1/S Phases</a>

## Application Details

Application Notes:	WB 1:500-1:2000 IHC 1:50-1:200
Restrictions:	For Research Use only

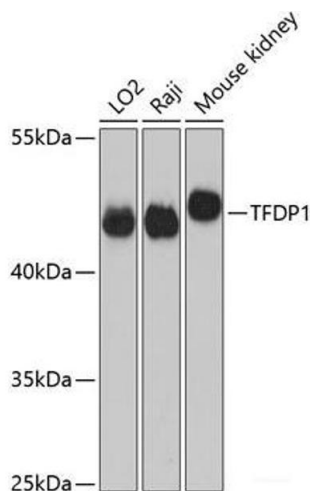
## Handling

Format:	Liquid
Concentration:	1 mg/mL
Buffer:	PBS with 0.02 % sodium azide, 50 % glycerol, pH 7.3
Preservative:	Sodium azide
Precaution of Use:	This product contains Sodium azide: a POISONOUS AND HAZARDOUS SUBSTANCE which should be handled by trained staff only.
Storage:	-20 °C
Storage Comment:	Store at -20°C. Avoid freeze / thaw cycles.



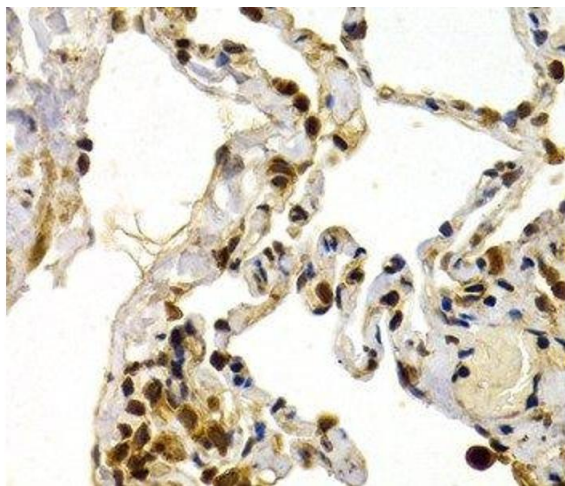
**Immunohistochemistry (Paraffin-embedded Sections)**

**Image 1.** Immunohistochemistry of paraffin-embedded Human colon tissue using TFDP1 Polyclonal Antibody at dilution of 1:200 (40x lens).



**Western Blotting**

**Image 2.** Western blot analysis of extracts of various cell lines using TFDP1 Polyclonal Antibody at dilution of 1:3000.



**Immunohistochemistry (Paraffin-embedded Sections)**

**Image 3.** Immunohistochemistry of paraffin-embedded Human lung tissue using TFDP1 Polyclonal Antibody at dilution of 1:200 (40x lens).