

Datasheet for ABIN7261409

anti-PSMB10 antibody

4 Images

[Go to Product page](#)

Overview

Quantity:	200 µL
Target:	PSMB10
Reactivity:	Human, Mouse, Rat
Host:	Rabbit
Clonality:	Polyclonal
Conjugate:	This PSMB10 antibody is un-conjugated
Application:	Western Blotting (WB), Immunohistochemistry (IHC), Immunofluorescence (IF)

Product Details

Immunogen:	Recombinant fusion protein of human PSMB10 (NP_002792.1).
Isotype:	IgG
Characteristics:	Polyclonal Antibody
Purification:	Affinity purification

Target Details

Target:	PSMB10
Alternative Name:	PSMB10 (PSMB10 Products)
Background:	The proteasome is a multicatalytic proteinase complex with a highly ordered ring-shaped 20S core structure. The core structure is composed of 4 rings of 28 non-identical subunits, 2 rings are composed of 7 alpha subunits and 2 rings are composed of 7 beta subunits. Proteasomes are distributed throughout eukaryotic cells at a high concentration and cleave peptides in an

Target Details

ATP/ubiquitin-dependent process in a non-lysosomal pathway. An essential function of a modified proteasome, the immunoproteasome, is the processing of class I MHC peptides. This gene encodes a member of the proteasome B-type family, also known as the T1B family, that is a 20S core beta subunit. Proteolytic processing is required to generate a mature subunit. Expression of this gene is induced by gamma interferon, and this gene product replaces catalytic subunit 2 (proteasome beta 7 subunit) in the immunoproteasome.

Molecular Weight: Observed_MW: 29 kDa
Calculated_MW: 28 kDa

Gene ID: 5699

UniProt: [P40306](#)

Pathways: [Mitotic G1-G1/S Phases](#), [DNA Replication](#), [Synthesis of DNA](#)

Application Details

Application Notes: WB 1:500-1:2000 IHC 1:50-1:200 IF 1:50-1:100

Restrictions: For Research Use only

Handling

Format: Liquid

Concentration: 1 mg/mL

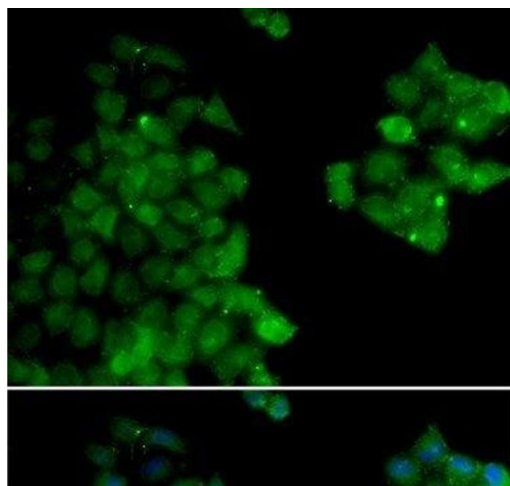
Buffer: PBS with 0.02 % sodium azide, 50 % glycerol, pH 7.3

Preservative: Sodium azide

Precaution of Use: This product contains Sodium azide: a POISONOUS AND HAZARDOUS SUBSTANCE which should be handled by trained staff only.

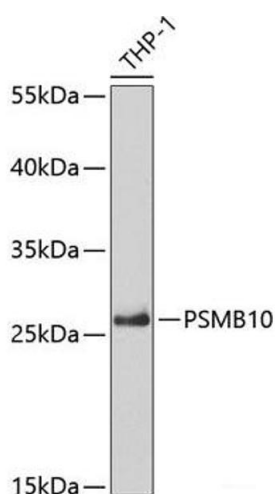
Storage: -20 °C

Storage Comment: Store at -20°C. Avoid freeze / thaw cycles.



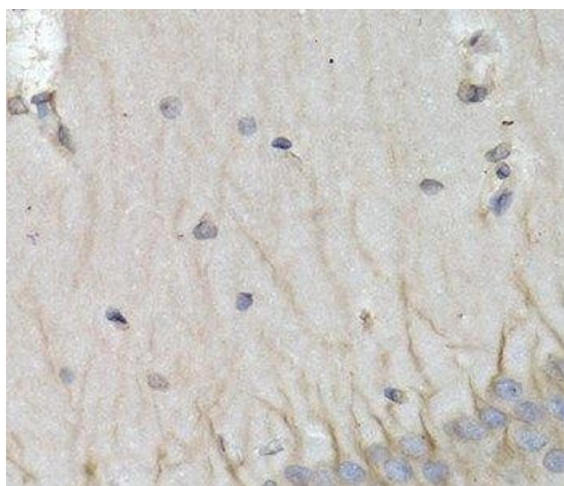
Immunofluorescence

Image 1. Immunofluorescence analysis of HeLa cells using PSMB10 Polyclonal Antibody



Western Blotting

Image 2. Western blot analysis of extracts of THP-1 cells using PSMB10 Polyclonal Antibody at dilution of 1:5000.



Immunohistochemistry (Paraffin-embedded Sections)

Image 3. Immunohistochemistry of paraffin-embedded Rat brain using PSMB10 Polyclonal Antibody at dilution of 1:200 (40x lens).

Please check the [product details page](#) for more images. Overall 4 images are available for ABIN7261409.