

Datasheet for ABIN7261441  
**anti-SIGMAR1 antibody**[Go to Product page](#)

## 4 Images

## Overview

Quantity:	200 µL
Target:	SIGMAR1
Reactivity:	Human, Mouse, Rat
Host:	Rabbit
Clonality:	Polyclonal
Conjugate:	This SIGMAR1 antibody is un-conjugated
Application:	Western Blotting (WB), Immunohistochemistry (IHC)

## Product Details

Immunogen:	Recombinant protein of human SIGMAR1
Isotype:	IgG
Characteristics:	Polyclonal Antibody
Purification:	Affinity purification

## Target Details

Target:	SIGMAR1
Alternative Name:	SIGMAR1 ( <a href="#">SIGMAR1 Products</a> )
Background:	This gene encodes a receptor protein that interacts with a variety of psychotomimetic drugs, including cocaine and amphetamines. The receptor is believed to play an important role in the cellular functions of various tissues associated with the endocrine, immune, and nervous systems. As indicated by its previous name, opioid receptor sigma 1 (OPRS1), the product of

## Target Details

this gene was erroneously thought to function as an opioid receptor, it is now thought to be a non-opioid receptor. Mutations in this gene has been associated with juvenile amyotrophic lateral sclerosis 16. Alternative splicing of this gene results in transcript variants encoding distinct isoforms.

Molecular Weight: Observed\_MW: 25 kDa  
Calculated\_MW: 11 kDa/21 kDa/22 kDa/25 kDa

Gene ID: 10280

UniProt: [Q99720](#)

Pathways: [SARS-CoV-2 Protein Interactome](#)

## Application Details

Application Notes: WB 1:500-1:2000 IHC 1:100-1:200

Restrictions: For Research Use only

## Handling

Format: Liquid

Concentration: 1 mg/mL

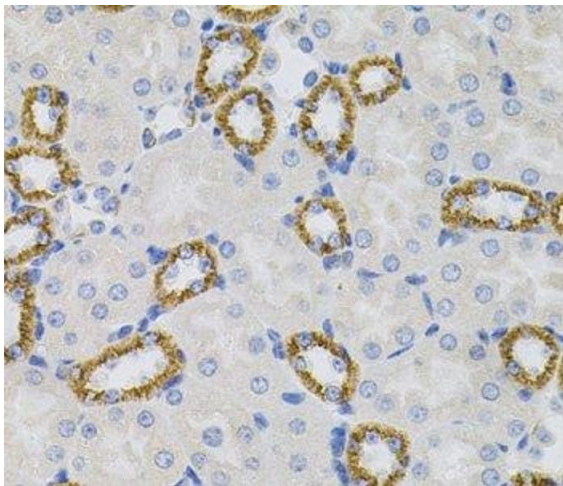
Buffer: PBS with 0.02 % sodium azide, 50 % glycerol, pH 7.3

Preservative: Sodium azide

Precaution of Use: This product contains Sodium azide: a POISONOUS AND HAZARDOUS SUBSTANCE which should be handled by trained staff only.

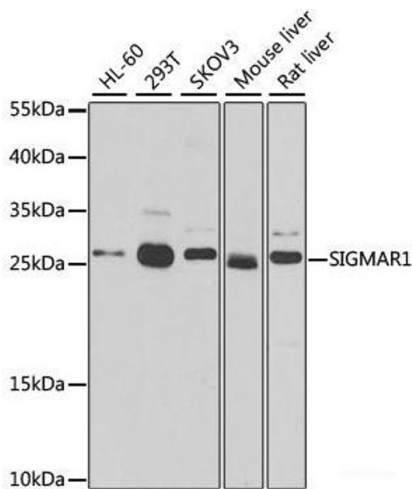
Storage: -20 °C

Storage Comment: Store at -20°C. Avoid freeze / thaw cycles.



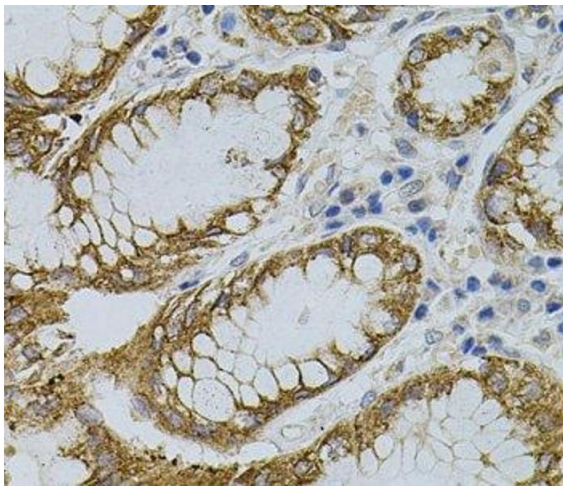
**Immunohistochemistry (Paraffin-embedded Sections)**

**Image 1.** Immunohistochemistry of paraffin-embedded Mouse kidney using SIGMAR1 Polyclonal Antibody



**Western Blotting**

**Image 2.** Western blot analysis of extracts of various cell lines using SIGMAR1 Polyclonal Antibody at dilution of 1:500.



**Immunohistochemistry (Paraffin-embedded Sections)**

**Image 3.** Immunohistochemistry of paraffin-embedded Human stomach using SIGMAR1 Polyclonal Antibody

Please check the [product details page](#) for more images. Overall 4 images are available for ABIN7261441.