



[Go to Product page](#)

Datasheet for ABIN7261449

anti-PSRC1 antibody

3 Images

Overview

Quantity:	200 µL
Target:	PSRC1
Reactivity:	Human, Mouse, Rat
Host:	Rabbit
Clonality:	Polyclonal
Conjugate:	This PSRC1 antibody is un-conjugated
Application:	Western Blotting (WB), Immunohistochemistry (IHC)

Product Details

Immunogen:	Recombinant fusion protein of human PSRC1 (NP_001005290.1).
Isotype:	IgG
Characteristics:	Polyclonal Antibody
Purification:	Affinity purification

Target Details

Target:	PSRC1
Alternative Name:	PSRC1 (PSRC1 Products)
Background:	This gene encodes a proline-rich protein that is a target for regulation by the tumor suppressor protein p53. The encoded protein plays an important role in mitosis by recruiting and regulating microtubule depolymerases that destabilize microtubules. Alternatively spliced transcript variants encoding different isoforms have been described.

Target Details

Molecular Weight:	Observed_MW: 39 kDa Calculated_MW: 16 kDa/33 kDa/35 kDa/38 kDa
Gene ID:	84722
UniProt:	Q6PGN9

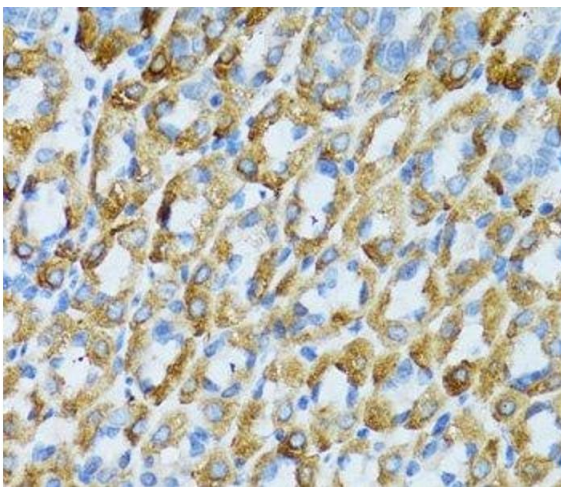
Application Details

Application Notes:	WB 1:500-1:2000 IHC 1:50-1:100
Restrictions:	For Research Use only

Handling

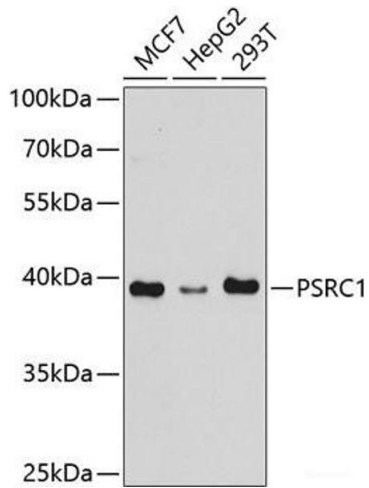
Format:	Liquid
Concentration:	1 mg/mL
Buffer:	PBS with 0.02 % sodium azide, 50 % glycerol, pH 7.3
Preservative:	Sodium azide
Precaution of Use:	This product contains Sodium azide: a POISONOUS AND HAZARDOUS SUBSTANCE which should be handled by trained staff only.
Storage:	-20 °C
Storage Comment:	Store at -20°C. Avoid freeze / thaw cycles.

Images



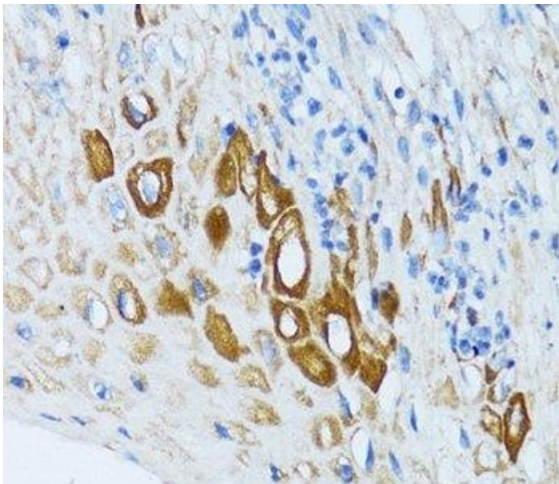
Immunohistochemistry (Paraffin-embedded Sections)

Image 1. Immunohistochemistry of paraffin-embedded Mouse stomach using PSRC1 Polyclonal Antibody at dilution of 1:100 (40x lens).



Western Blotting

Image 2. Western blot analysis of extracts of various cell lines using PSRC1 Polyclonal Antibody at dilution of 1:1000.



Immunohistochemistry (Paraffin-embedded Sections)

Image 3. Immunohistochemistry of paraffin-embedded Human esophagus using PSRC1 Polyclonal Antibody at dilution of 1:100 (40x lens).