

Datasheet for ABIN7261467

**anti-SLC3A1 antibody**[Go to Product page](#)**1** Image

## Overview

Quantity:	200 µL
Target:	SLC3A1
Reactivity:	Human, Mouse, Rat
Host:	Rabbit
Clonality:	Polyclonal
Conjugate:	This SLC3A1 antibody is un-conjugated
Application:	Immunofluorescence (IF)

## Product Details

Immunogen:	Recombinant fusion protein of human SLC3A1 (NP_000332.2).
Isotype:	IgG
Characteristics:	Polyclonal Antibody
Purification:	Affinity purification

## Target Details

Target:	SLC3A1
Alternative Name:	SLC3A1 ( <a href="#">SLC3A1 Products</a> )
Background:	<p>This gene encodes a type II membrane glycoprotein which is one of the components of the renal amino acid transporter which transports neutral and basic amino acids in the renal tubule and intestinal tract. Mutations and deletions in this gene are associated with cystinuria.</p> <p>Alternatively spliced transcript variants have been described, but their biological validity has not</p>

## Target Details

	been determined.
Gene ID:	6519
UniProt:	<a href="#">Q07837</a>

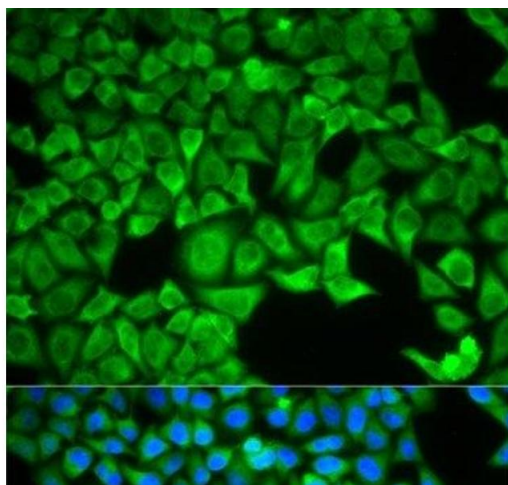
## Application Details

Application Notes:	IF 1:50-1:200
Restrictions:	For Research Use only

## Handling

Format:	Liquid
Concentration:	1 mg/mL
Buffer:	PBS with 0.02 % sodium azide, 50 % glycerol, pH 7.3
Preservative:	Sodium azide
Precaution of Use:	This product contains Sodium azide: a POISONOUS AND HAZARDOUS SUBSTANCE which should be handled by trained staff only.
Storage:	-20 °C
Storage Comment:	Store at -20°C. Avoid freeze / thaw cycles.

## Images



### Immunofluorescence

**Image 1.** Immunofluorescence analysis of HeLa cells using SLC3A1 Polyclonal Antibody