

Datasheet for ABIN7261500

anti-FZR1 antibody[Go to Product page](#)**1** Image

Overview

Quantity:	200 µL
Target:	FZR1
Reactivity:	Human, Mouse
Host:	Rabbit
Clonality:	Polyclonal
Conjugate:	This FZR1 antibody is un-conjugated
Application:	Immunofluorescence (IF)

Product Details

Immunogen:	Recombinant fusion protein of human FZR1 (NP_057347.2).
Isotype:	IgG
Characteristics:	Polyclonal Antibody
Purification:	Affinity purification

Target Details

Target:	FZR1
Alternative Name:	FZR1 (FZR1 Products)
Background:	FZR1 (Fizzy And Cell Division Cycle 20 Related 1) is a Protein Coding gene. Diseases associated with FZR1 include Breast Cancer. Among its related pathways are Regulation of activated PAK-2p34 by proteasome mediated degradation and Cell cycle_Role of APC in cell cycle regulation. An important paralog of this gene is CDC20.

Target Details

Gene ID:	51343
UniProt:	Q9UM11
Pathways:	DNA Replication , Synthesis of DNA

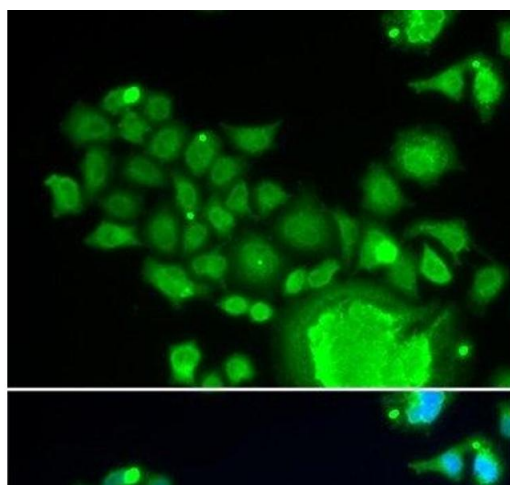
Application Details

Application Notes:	IF 1:50-1:200
Restrictions:	For Research Use only

Handling

Format:	Liquid
Concentration:	1 mg/mL
Buffer:	PBS with 0.02 % sodium azide, 50 % glycerol, pH 7.3
Preservative:	Sodium azide
Precaution of Use:	This product contains Sodium azide: a POISONOUS AND HAZARDOUS SUBSTANCE which should be handled by trained staff only.
Storage:	-20 °C
Storage Comment:	Store at -20°C. Avoid freeze / thaw cycles.

Images



Immunofluorescence

Image 1. Immunofluorescence analysis of HeLa cells using FZR1 Polyclonal Antibody