



Datasheet for ABIN7261502

anti-HAX1 antibody

3 Images



[Go to Product page](#)

Overview

Quantity:	200 µL
Target:	HAX1
Reactivity:	Human, Mouse, Rat
Host:	Rabbit
Clonality:	Polyclonal
Conjugate:	This HAX1 antibody is un-conjugated
Application:	Western Blotting (WB), Immunohistochemistry (IHC), Immunofluorescence (IF)

Product Details

Immunogen:	Recombinant fusion protein of human HAX1 (NP_006109.2).
Isotype:	IgG
Characteristics:	Polyclonal Antibody
Purification:	Affinity purification

Target Details

Target:	HAX1
Alternative Name:	HAX1 (HAX1 Products)
Background:	The protein encoded by this gene is known to associate with hematopoietic cell-specific Lyn substrate 1, a substrate of Src family tyrosine kinases. It also interacts with the product of the polycystic kidney disease 2 gene, mutations in which are associated with autosomal-dominant polycystic kidney disease, and with the F-actin-binding protein, cortactin. It was earlier thought

Target Details

that this gene product is mainly localized in the mitochondria, however, recent studies indicate it to be localized in the cell body. Mutations in this gene result in autosomal recessive severe congenital neutropenia, also known as Kostmann disease. Two transcript variants encoding different isoforms have been found for this gene.

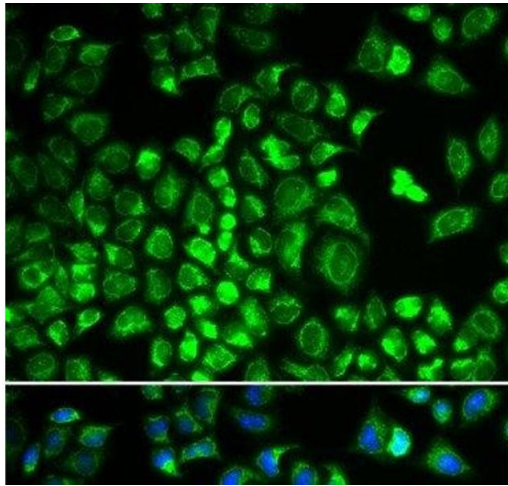
Molecular Weight:	Observed_MW: 36 kDa Calculated_MW: 14 kDa/21 kDa/26 kDa/28 kDa/31 kDa/32 kDa
Gene ID:	10456
UniProt:	O00165
Pathways:	Regulation of Actin Filament Polymerization

Application Details

Application Notes:	WB 1:500-1:2000 IHC 1:50-1:200 IF 1:10-1:100
Restrictions:	For Research Use only

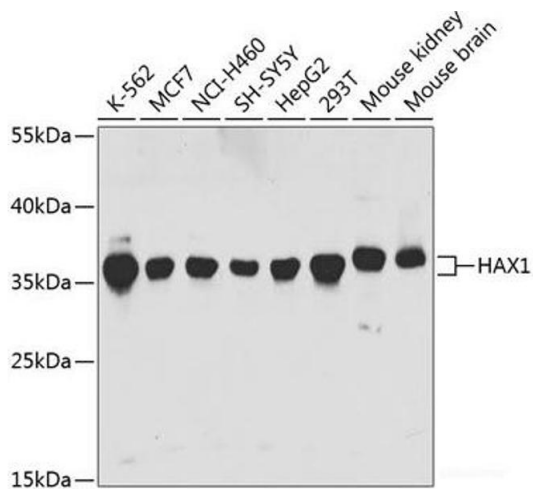
Handling

Format:	Liquid
Concentration:	1 mg/mL
Buffer:	PBS with 0.02 % sodium azide, 50 % glycerol, pH 7.3
Preservative:	Sodium azide
Precaution of Use:	This product contains Sodium azide: a POISONOUS AND HAZARDOUS SUBSTANCE which should be handled by trained staff only.
Storage:	-20 °C
Storage Comment:	Store at -20°C. Avoid freeze / thaw cycles.



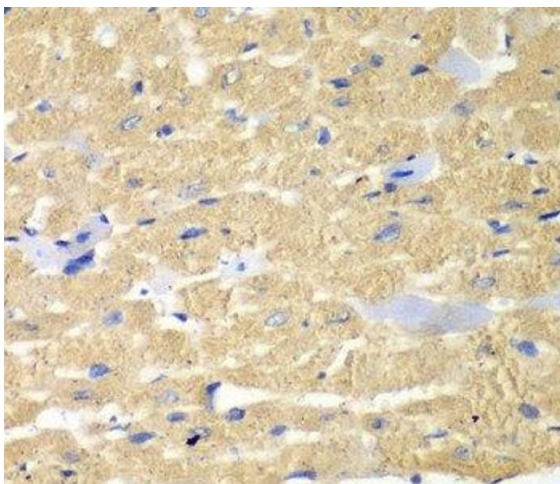
Immunofluorescence

Image 1. Immunofluorescence analysis of A549 cells using HAX1 Polyclonal Antibody



Western Blotting

Image 2. Western blot analysis of extracts of various cell lines using HAX1 Polyclonal Antibody at dilution of 1:1000.



Immunohistochemistry (Paraffin-embedded Sections)

Image 3. Immunohistochemistry of paraffin-embedded Mouse heart using HAX1 Polyclonal Antibody at dilution of 1:100 (40x lens).