



[Go to Product page](#)

Datasheet for ABIN7261612

## anti-EPO antibody

### 4 Images

#### Overview

Quantity:	200 µL
Target:	EPO
Reactivity:	Human, Mouse, Rat
Host:	Rabbit
Clonality:	Polyclonal
Conjugate:	This EPO antibody is un-conjugated
Application:	Western Blotting (WB), Immunohistochemistry (IHC)

#### Product Details

Immunogen:	A synthetic peptide of human EPO
Isotype:	IgG
Characteristics:	Polyclonal Antibody
Purification:	Affinity purification

#### Target Details

Target:	EPO
Alternative Name:	EPO ( <a href="#">EPO Products</a> )
Target Type:	Hormone
Background:	This gene is a member of the EPO/TPO family and encodes a secreted, glycosylated cytokine composed of four alpha helical bundles. The protein is found in the plasma and regulates red

## Target Details

---

cell production by promoting erythroid differentiation and initiating hemoglobin synthesis. This protein also has neuroprotective activity against a variety of potential brain injuries and antiapoptotic functions in several tissue types.

Molecular Weight: Observed\_MW: 30 kDa  
Calculated\_MW: 21 kDa

Gene ID: 2056

UniProt: [P01588](#)

Pathways: [JAK-STAT Signaling](#), [Hormone Activity](#), [Negative Regulation of intrinsic apoptotic Signaling](#),  
[Negative Regulation of Transporter Activity](#)

## Application Details

---

Application Notes: WB 1:500-1:2000 IHC 1:100-1:200

Restrictions: For Research Use only

## Handling

---

Format: Liquid

Concentration: 1 mg/mL

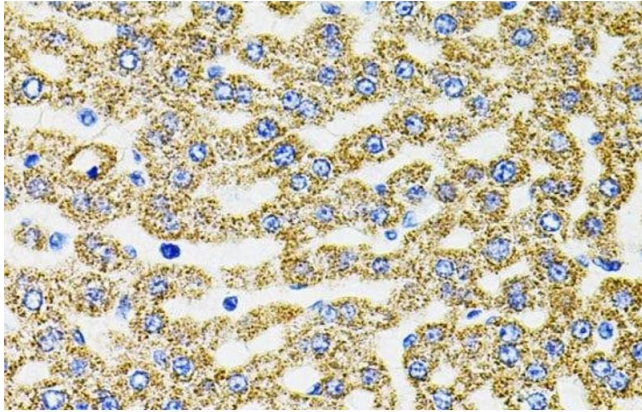
Buffer: PBS with 0.02 % sodium azide, 50 % glycerol, pH 7.3

Preservative: Sodium azide

Precaution of Use: This product contains Sodium azide: a POISONOUS AND HAZARDOUS SUBSTANCE which should be handled by trained staff only.

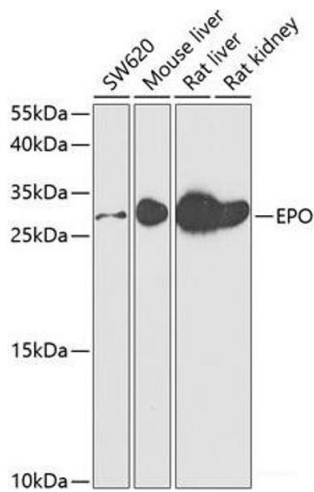
Storage: -20 °C

Storage Comment: Store at -20°C. Avoid freeze / thaw cycles.



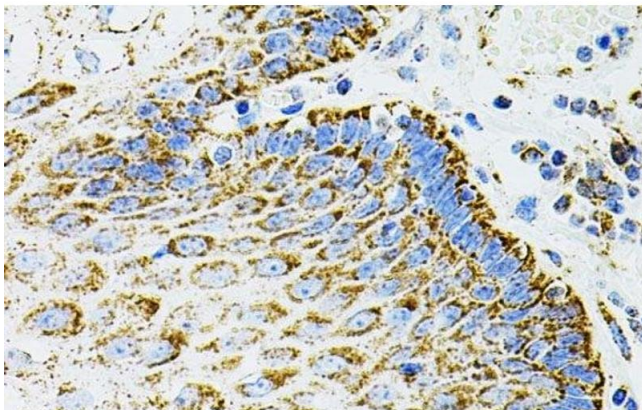
### Immunohistochemistry (Paraffin-embedded Sections)

**Image 1.** Immunohistochemistry of paraffin-embedded Rat liver using EPO Polyclonal Antibody



### Western Blotting

**Image 2.** Western blot analysis of extracts of various cell lines using EPO Polyclonal Antibody at dilution of 1:500.



### Immunohistochemistry (Paraffin-embedded Sections)

**Image 3.** Immunohistochemistry of paraffin-embedded Human esophagus using EPO Polyclonal Antibody

Please check the [product details page](#) for more images. Overall 4 images are available for ABIN7261612.