

Datasheet for ABIN7261644

**anti-GRB7 antibody****1** Image[Go to Product page](#)

## Overview

Quantity:	200 µL
Target:	GRB7
Reactivity:	Human, Mouse, Rat
Host:	Rabbit
Clonality:	Polyclonal
Conjugate:	This GRB7 antibody is un-conjugated
Application:	Western Blotting (WB)

## Product Details

Immunogen:	Recombinant fusion protein of human GRB7 (NP_001229372.1).
Isotype:	IgG
Characteristics:	Polyclonal Antibody
Purification:	Affinity purification

## Target Details

Target:	GRB7
Alternative Name:	GRB7 ( <a href="#">GRB7 Products</a> )
Background:	The product of this gene belongs to a small family of adapter proteins that are known to interact with a number of receptor tyrosine kinases and signaling molecules. This gene encodes a growth factor receptor-binding protein that interacts with epidermal growth factor receptor (EGFR) and ephrin receptors. The protein plays a role in the integrin signaling pathway

## Target Details

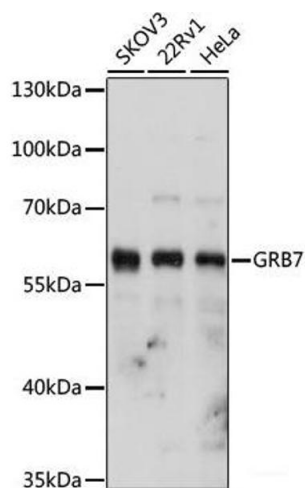
	and cell migration by binding with focal adhesion kinase (FAK). Several transcript variants encoding two different isoforms have been found for this gene.
Molecular Weight:	Observed_MW: 60 kDa Calculated_MW: 49 kDa/55 kDa/59 kDa/62 kDa
Gene ID:	2886
UniProt:	<a href="#">Q14451</a>
Pathways:	<a href="#">EGFR Signaling Pathway</a> , <a href="#">Ribonucleoprotein Complex Subunit Organization</a>

## Application Details

Application Notes:	WB 1:500-1:2000
Restrictions:	For Research Use only

## Handling

Format:	Liquid
Concentration:	1 mg/mL
Buffer:	PBS with 0.02 % sodium azide, 50 % glycerol, pH 7.3
Preservative:	Sodium azide
Precaution of Use:	This product contains Sodium azide: a POISONOUS AND HAZARDOUS SUBSTANCE which should be handled by trained staff only.
Storage:	-20 °C
Storage Comment:	Store at -20°C. Avoid freeze / thaw cycles.



Western Blotting

**Image 1.** Western blot analysis of extracts of various cell lines using GRB7 Polyclonal Antibody at dilution of 1:1000.