

Datasheet for ABIN7261762

anti-COMP antibody**2** Images[Go to Product page](#)

Overview

Quantity:	200 µL
Target:	COMP
Reactivity:	Human, Mouse, Rat
Host:	Rabbit
Clonality:	Polyclonal
Conjugate:	This COMP antibody is un-conjugated
Application:	Western Blotting (WB), Immunofluorescence (IF)

Product Details

Immunogen:	Recombinant fusion protein of human COMP (NP_000086.2).
Isotype:	IgG
Characteristics:	Polyclonal Antibody
Purification:	Affinity purification

Target Details

Target:	COMP
Alternative Name:	COMP (COMP Products)
Background:	The protein encoded by this gene is a noncollagenous extracellular matrix (ECM) protein. It consists of five identical glycoprotein subunits, each with EGF-like and calcium-binding (thrombospondin-like) domains. Oligomerization results from formation of a five-stranded coiled coil and disulfides. Binding to other ECM proteins such as collagen appears to depend on

Target Details

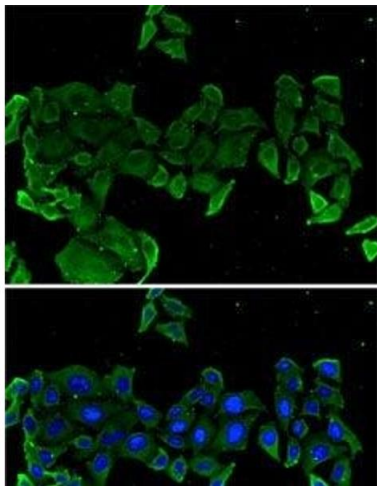
	divalent cations. Contraction or expansion of a 5 aa aspartate repeat and other mutations can cause pseudochoondroplasia (PSACH) and multiple epiphyseal dysplasia (MED).
Molecular Weight:	Observed_MW: 110 kDa Calculated_MW: 77 kDa/82 kDa
Gene ID:	1311
UniProt:	P49747

Application Details

Application Notes:	WB 1:500-1:2000 IF 1:10-1:100
Restrictions:	For Research Use only

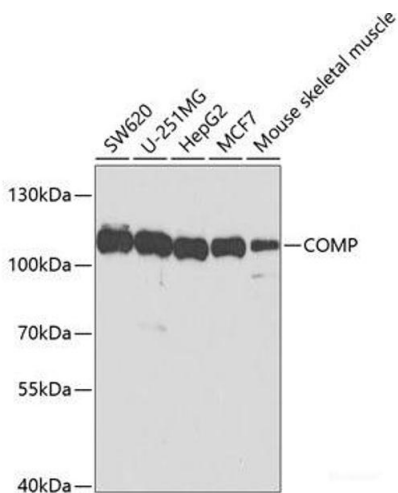
Handling

Format:	Liquid
Concentration:	1 mg/mL
Buffer:	PBS with 0.02 % sodium azide, 50 % glycerol, pH 7.3
Preservative:	Sodium azide
Precaution of Use:	This product contains Sodium azide: a POISONOUS AND HAZARDOUS SUBSTANCE which should be handled by trained staff only.
Storage:	-20 °C
Storage Comment:	Store at -20°C. Avoid freeze / thaw cycles.



Immunofluorescence

Image 1. Immunofluorescence analysis of U2OS cells using COMP Polyclonal Antibody



Western Blotting

Image 2. Western blot analysis of extracts of various cell lines using COMP Polyclonal Antibody at dilution of 1:1000.