



Datasheet for ABIN7261806
anti-PTH antibody



[Go to Product page](#)

1 Image

Overview

Quantity:	200 µL
Target:	PTH
Reactivity:	Human
Host:	Rabbit
Clonality:	Polyclonal
Conjugate:	This PTH antibody is un-conjugated
Application:	Immunofluorescence (IF)

Product Details

Immunogen:	Recombinant fusion protein of human PTH (NP_000306.1).
Isotype:	IgG
Characteristics:	Polyclonal Antibody
Purification:	Affinity purification

Target Details

Target:	PTH
Alternative Name:	PTH (PTH Products)
Target Type:	Hormone
Background:	This gene encodes a member of the parathyroid family of proteins. The encoded preproprotein is proteolytically processed to generate a protein that binds to the parathyroid

Target Details

hormone/parathyroid hormone-related peptide receptor and regulates blood calcium and phosphate levels. Excess production of the encoded protein, known as hyperparathyroidism, can result in hypercalcemia and kidney stones. On the other hand, defective processing of the encoded protein may lead to hypoparathyroidism, which can result in hypocalcemia and numbness. Alternative splicing results in multiple transcript variants.

Gene ID: 5741

UniProt: [P01270](#)

Pathways: [cAMP Metabolic Process](#), [Regulation of Carbohydrate Metabolic Process](#)

Application Details

Application Notes: IF 1:10-1:100

Restrictions: For Research Use only

Handling

Format: Liquid

Concentration: 1 mg/mL

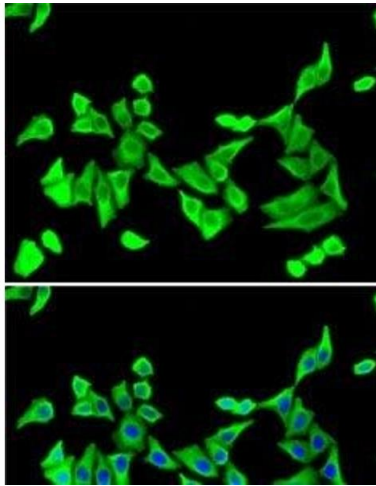
Buffer: PBS with 0.02 % sodium azide, 50 % glycerol, pH 7.3

Preservative: Sodium azide

Precaution of Use: This product contains Sodium azide: a POISONOUS AND HAZARDOUS SUBSTANCE which should be handled by trained staff only.

Storage: -20 °C

Storage Comment: Store at -20°C. Avoid freeze / thaw cycles.



Immunofluorescence

Image 1. Immunofluorescence analysis of U2OS cells using PTH Polyclonal Antibody