

Datasheet for ABIN7261812

anti-SP100 antibody[Go to Product page](#)**1** Image

Overview

Quantity:	200 µL
Target:	SP100
Reactivity:	Human, Mouse
Host:	Rabbit
Clonality:	Polyclonal
Conjugate:	This SP100 antibody is un-conjugated
Application:	Western Blotting (WB)

Product Details

Immunogen:	Recombinant fusion protein of human SP100 (NP_001193631.1).
Isotype:	IgG
Characteristics:	Polyclonal Antibody
Purification:	Affinity purification

Target Details

Target:	SP100
Alternative Name:	SP100 (SP100 Products)
Background:	This gene encodes a subnuclear organelle and major component of the PML (promyelocytic leukemia)-SP100 nuclear bodies. PML and SP100 are covalently modified by the SUMO-1 modifier, which is considered crucial to nuclear body interactions. The encoded protein binds heterochromatin proteins and is thought to play a role in tumorigenesis, immunity, and gene

Target Details

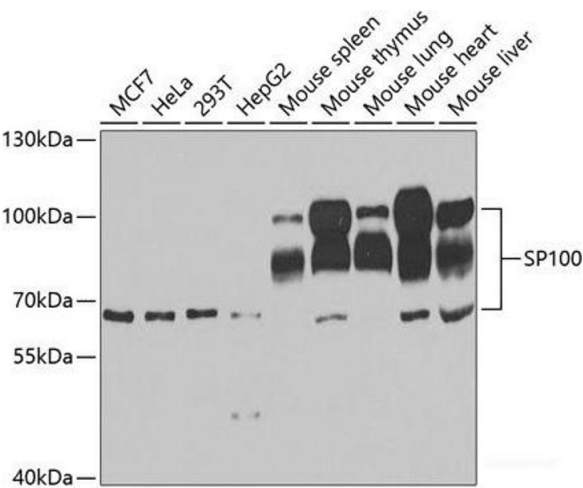
	regulation. Alternatively spliced variants have been identified for this gene, one of which encodes a high-mobility group protein.
Molecular Weight:	Observed_MW: 66-100 kDa Calculated_MW: 50 kDa/53 kDa/78 kDa/100 kDa/101 kDa
Gene ID:	6672
UniProt:	P23497
Pathways:	Retinoic Acid Receptor Signaling Pathway

Application Details

Application Notes:	WB 1:500-1:2000
Restrictions:	For Research Use only

Handling

Format:	Liquid
Concentration:	1 mg/mL
Buffer:	PBS with 0.02 % sodium azide, 50 % glycerol, pH 7.3
Preservative:	Sodium azide
Precaution of Use:	This product contains Sodium azide: a POISONOUS AND HAZARDOUS SUBSTANCE which should be handled by trained staff only.
Storage:	-20 °C
Storage Comment:	Store at -20°C. Avoid freeze / thaw cycles.



Western Blotting

Image 1. Western blot analysis of extracts of various cell lines using SP100 Polyclonal Antibody at dilution of 1:1000.