

Datasheet for ABIN7261822

**anti-WNT2 antibody****3** Images[Go to Product page](#)

## Overview

Quantity:	200 µL
Target:	WNT2
Reactivity:	Human, Rat
Host:	Rabbit
Clonality:	Polyclonal
Conjugate:	This WNT2 antibody is un-conjugated
Application:	Western Blotting (WB), Immunohistochemistry (IHC)

## Product Details

Immunogen:	Recombinant fusion protein of human WNT2 (NP_003382.1).
Isotype:	IgG
Characteristics:	Polyclonal Antibody
Purification:	Affinity purification

## Target Details

Target:	WNT2
Alternative Name:	WNT2 ( <a href="#">WNT2 Products</a> )
Background:	This gene is a member of the WNT gene family. The WNT gene family consists of structurally related genes which encode secreted signaling proteins. These proteins have been implicated in oncogenesis and in several developmental processes, including regulation of cell fate and patterning during embryogenesis. Alternatively spliced transcript variants have been identified

## Target Details

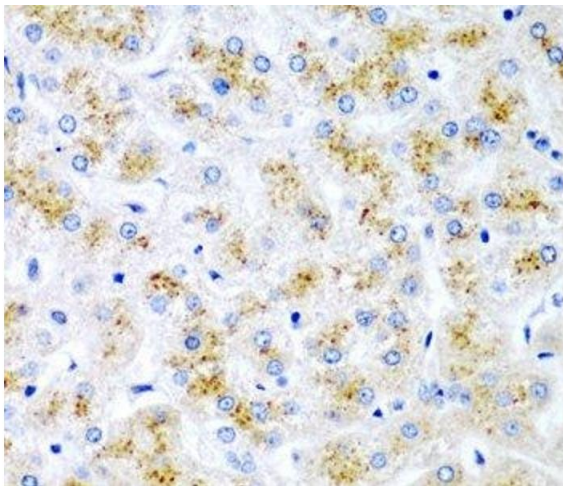
	for this gene.
Molecular Weight:	Observed_MW: 56 kDa Calculated_MW: 40 kDa
Gene ID:	7472
UniProt:	<a href="#">P09544</a>
Pathways:	<a href="#">WNT Signaling</a>

## Application Details

Application Notes:	WB 1:500-1:2000 IHC 1:50-1:200
Restrictions:	For Research Use only

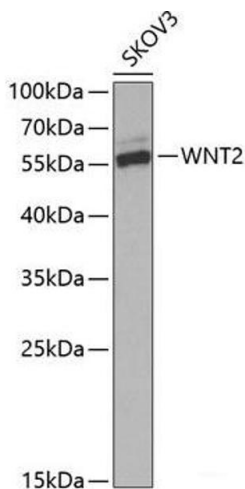
## Handling

Format:	Liquid
Concentration:	1 mg/mL
Buffer:	PBS with 0.02 % sodium azide, 50 % glycerol, pH 7.3
Preservative:	Sodium azide
Precaution of Use:	This product contains Sodium azide: a POISONOUS AND HAZARDOUS SUBSTANCE which should be handled by trained staff only.
Storage:	-20 °C
Storage Comment:	Store at -20°C. Avoid freeze / thaw cycles.



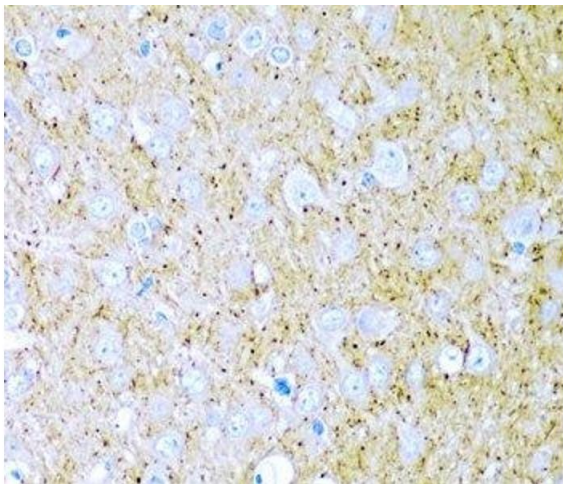
**Immunohistochemistry (Paraffin-embedded Sections)**

**Image 1.** Immunohistochemistry of paraffin-embedded Human liver tissue using WNT2 Polyclonal Antibody at dilution of 1:200 (40x lens).



**Western Blotting**

**Image 2.** Western blot analysis of extracts of SKOV3 cells using WNT2 Polyclonal Antibody at dilution of 1:1000.



**Immunohistochemistry (Paraffin-embedded Sections)**

**Image 3.** Immunohistochemistry of paraffin-embedded Rat brain tissue using WNT2 Polyclonal Antibody at dilution of 1:200 (40x lens).