

Datasheet for ABIN7261874

**anti-RBM3 antibody**

## 4 Images

[Go to Product page](#)

## Overview

Quantity:	200 µL
Target:	RBM3
Reactivity:	Human, Mouse, Rat
Host:	Rabbit
Clonality:	Polyclonal
Conjugate:	This RBM3 antibody is un-conjugated
Application:	Western Blotting (WB), Immunohistochemistry (IHC)

## Product Details

Immunogen:	Recombinant fusion protein of human RBM3 (NP_006734.1).
Isotype:	IgG
Characteristics:	Polyclonal Antibody
Purification:	Affinity purification

## Target Details

Target:	RBM3
Alternative Name:	RBM3 ( <a href="#">RBM3 Products</a> )
Background:	This gene is a member of the glycine-rich RNA-binding protein family and encodes a protein with one RNA recognition motif (RRM) domain. Expression of this gene is induced by cold shock and low oxygen tension. A pseudogene exists on chromosome 1. Multiple alternatively spliced transcript variants that are predicted to encode different isoforms have been

## Target Details

characterized although some of these variants fit nonsense-mediated decay (NMD) criteria.

Molecular Weight: Observed\_MW: 17 kDa  
Calculated\_MW: 17 kDa

Gene ID: 5935

UniProt: [P98179](#)

## Application Details

Application Notes: WB 1:200-1:2000 IHC 1:50-1:200

Restrictions: For Research Use only

## Handling

Format: Liquid

Concentration: 1 mg/mL

Buffer: PBS with 0.02 % sodium azide, 50 % glycerol, pH 7.3

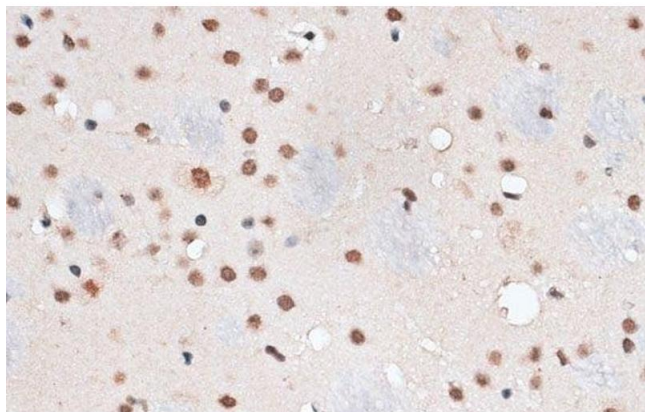
Preservative: Sodium azide

Precaution of Use: This product contains Sodium azide: a POISONOUS AND HAZARDOUS SUBSTANCE which should be handled by trained staff only.

Storage: -20 °C

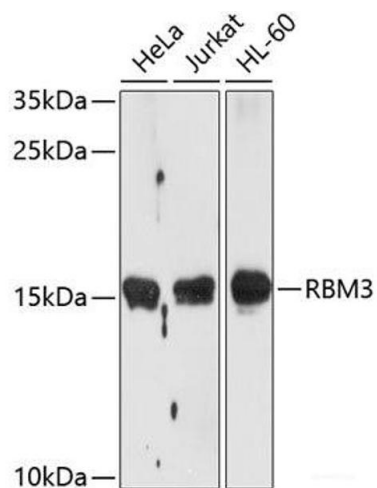
Storage Comment: Store at -20°C. Avoid freeze / thaw cycles.

## Images



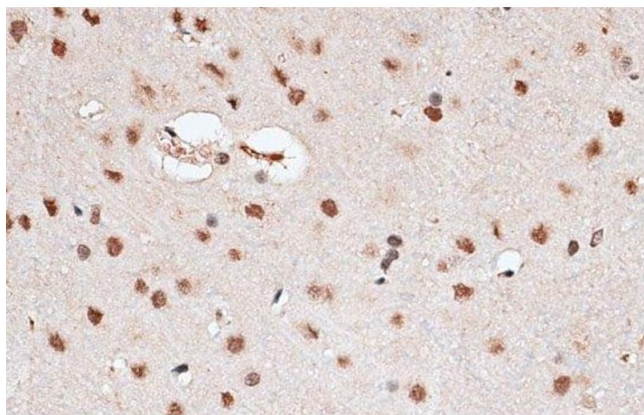
### Immunohistochemistry (Paraffin-embedded Sections)

**Image 1.** Immunohistochemistry of paraffin-embedded Mouse brain using RBM3 Polyclonal Antibody at dilution of 1:100 (40x lens).



#### Western Blotting

**Image 2.** Western blot analysis of extracts of various cell lines using RBM3 Polyclonal Antibody at dilution of 1:1000.



#### Immunohistochemistry (Paraffin-embedded Sections)

**Image 3.** Immunohistochemistry of paraffin-embedded Rat brain using RBM3 Polyclonal Antibody at dilution of 1:100 (40x lens).

Please check the [product details page](#) for more images. Overall 4 images are available for ABIN7261874.