



Datasheet for ABIN7261892

anti-METAP2 antibody



[Go to Product page](#)

1 Image

Overview

Quantity:	200 µL
Target:	METAP2
Reactivity:	Human, Mouse
Host:	Rabbit
Clonality:	Polyclonal
Conjugate:	This METAP2 antibody is un-conjugated
Application:	Western Blotting (WB)

Product Details

Immunogen:	Recombinant fusion protein of human METAP2 (NP_006829.1).
Isotype:	IgG
Characteristics:	Polyclonal Antibody
Purification:	Affinity purification

Target Details

Target:	METAP2
Alternative Name:	METAP2 (METAP2 Products)
Background:	The protein encoded by this gene is a member of the methionyl aminopeptidase family. The encoded protein functions both by protecting the alpha subunit of eukaryotic initiation factor 2 from inhibitory phosphorylation and by removing the amino-terminal methionine residue from nascent proteins. Increased expression of this gene is associated with various forms of cancer,

Target Details

and the anti-cancer drugs fumagillin and ovalicin inhibit the protein by irreversibly binding to its active site. Inhibitors of this gene have also been shown to be effective for the treatment of obesity. A pseudogene of this gene is located on chromosome 2. Several transcript variants encoding different isoforms have been found for this gene.

Molecular Weight:	Observed_MW: 60 kDa Calculated_MW: 50 kDa/52 kDa
-------------------	---

Gene ID:	10988
----------	-------

UniProt:	P50579
----------	------------------------

Pathways:	Regulation of G-Protein Coupled Receptor Protein Signaling
-----------	--

Application Details

Application Notes:	WB 1:200-1:2000
--------------------	-----------------

Restrictions:	For Research Use only
---------------	-----------------------

Handling

Format:	Liquid
---------	--------

Concentration:	1 mg/mL
----------------	---------

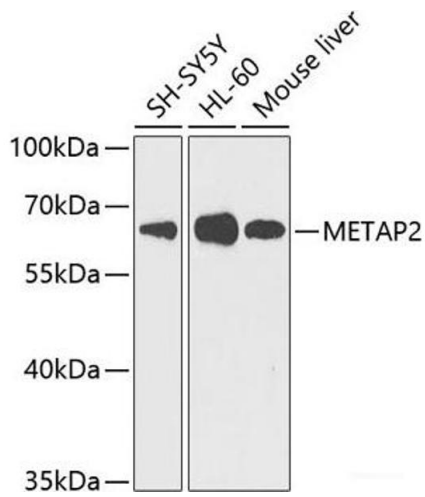
Buffer:	PBS with 0.02 % sodium azide, 50 % glycerol, pH 7.3
---------	---

Preservative:	Sodium azide
---------------	--------------

Precaution of Use:	This product contains Sodium azide: a POISONOUS AND HAZARDOUS SUBSTANCE which should be handled by trained staff only.
--------------------	--

Storage:	-20 °C
----------	--------

Storage Comment:	Store at -20°C. Avoid freeze / thaw cycles.
------------------	---



Western Blotting

Image 1. Western blot analysis of extracts of various cell lines using METAP2 Polyclonal Antibody at dilution of 1:1000.