

Datasheet for ABIN7261932

**anti-SRRM1 antibody**[Go to Product page](#)**1** Image

## Overview

Quantity:	200 µL
Target:	SRRM1
Reactivity:	Mouse, Human
Host:	Rabbit
Clonality:	Polyclonal
Conjugate:	This SRRM1 antibody is un-conjugated
Application:	Western Blotting (WB)

## Product Details

Immunogen:	Recombinant fusion protein of human SRRM1 (NP_005830.2).
Isotype:	IgG
Characteristics:	Polyclonal Antibody
Purification:	Affinity purification

## Target Details

Target:	SRRM1
Alternative Name:	SRRM1 ( <a href="#">SRRM1 Products</a> )
Background:	SRRM1 (Serine And Arginine Repetitive Matrix 1) is a Protein Coding gene. Diseases associated with SRRM1 include Cortical Thymoma and Epithelial Malignant Thymoma. Among its related pathways are Cleavage of Growing Transcript in the Termination Region and Transport of Mature Transcript to Cytoplasm.

## Target Details

Molecular Weight:	Observed_MW: 102 kDa
	Calculated_MW: 102 kDa
Gene ID:	10250
UniProt:	<a href="#">Q8IYB3</a>

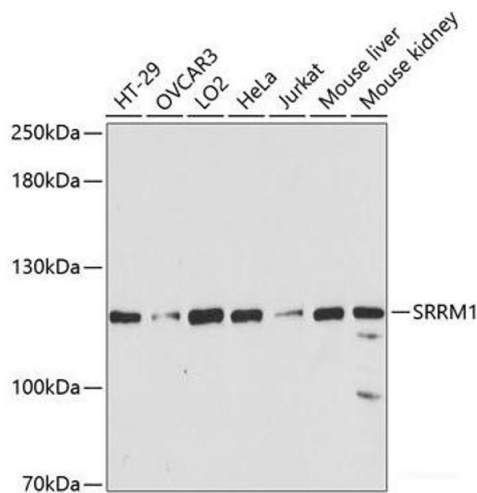
## Application Details

Application Notes:	WB 1:500-1:1000
Restrictions:	For Research Use only

## Handling

Format:	Liquid
Concentration:	1 mg/mL
Buffer:	PBS with 0.02 % sodium azide, 50 % glycerol, pH 7.3
Preservative:	Sodium azide
Precaution of Use:	This product contains Sodium azide: a POISONOUS AND HAZARDOUS SUBSTANCE which should be handled by trained staff only.
Storage:	-20 °C
Storage Comment:	Store at -20°C. Avoid freeze / thaw cycles.

## Images



### Western Blotting

**Image 1.** Western blot analysis of extracts of various cell lines using SRRM1 Polyclonal Antibody at dilution of 1:3000.