

Datasheet for ABIN7261946
anti-HuC/ELAVL3 antibody[Go to Product page](#)

6 Images

Overview

| | |
|--------------|--|
| Quantity: | 200 µL |
| Target: | HuC/ELAVL3 (ELAVL3) |
| Reactivity: | Human, Mouse, Rat |
| Host: | Rabbit |
| Clonality: | Polyclonal |
| Conjugate: | This HuC/ELAVL3 antibody is un-conjugated |
| Application: | Western Blotting (WB), Immunohistochemistry (IHC), Immunofluorescence (IF) |

Product Details

| | |
|------------------|--|
| Immunogen: | A synthetic peptide of human ELAVL3 (NP_001411.2). |
| Isotype: | IgG |
| Characteristics: | Polyclonal Antibody |
| Purification: | Affinity purification |

Target Details

| | |
|-------------------|--|
| Target: | HuC/ELAVL3 (ELAVL3) |
| Alternative Name: | ELAVL3 (ELAVL3 Products) |
| Background: | A member of the ELAVL protein family, ELAV-like 3 is a neural-specific RNA-binding protein which contains three RNP-type RNA recognition motifs. The observation that ELAVL3 is one of several Hu antigens (neuronal-specific RNA-binding proteins) recognized by the anti-Hu serum antibody present in sera from patients with paraneoplastic encephalomyelitis and sensory |

Target Details

neuropathy (PEM/PSN) suggests it has a role in neurogenesis. Two alternatively spliced transcript variants encoding distinct isoforms have been found for this gene.

Molecular Weight: Observed_MW: 37 kDa
Calculated_MW: 38 kDa/39 kDa

Gene ID: 1995

UniProt: [Q14576](#)

Application Details

Application Notes: WB 1:500-1:1000 IHC 1:50-1:200 IF 1:50-1:200

Restrictions: For Research Use only

Handling

Format: Liquid

Concentration: 1 mg/mL

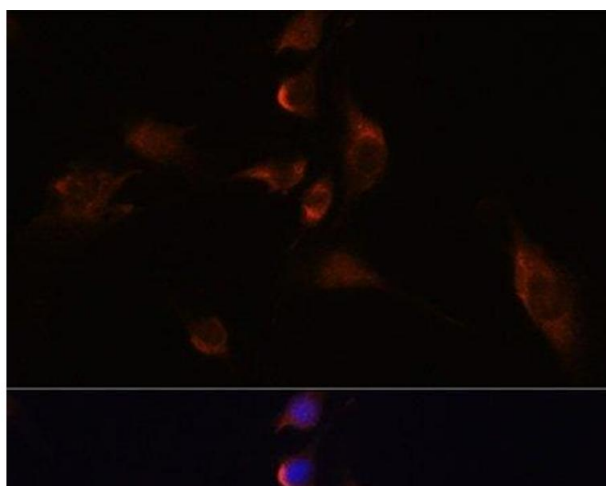
Buffer: PBS with 0.02 % sodium azide, 50 % glycerol, pH 7.3

Preservative: Sodium azide

Precaution of Use: This product contains Sodium azide: a POISONOUS AND HAZARDOUS SUBSTANCE which should be handled by trained staff only.

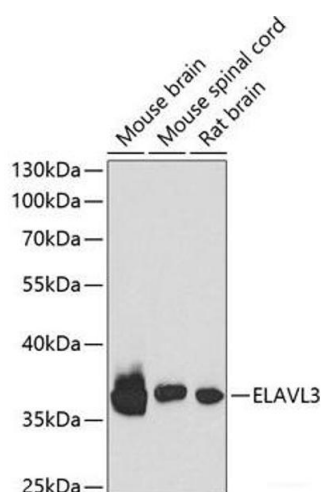
Storage: -20 °C

Storage Comment: Store at -20°C. Avoid freeze / thaw cycles.



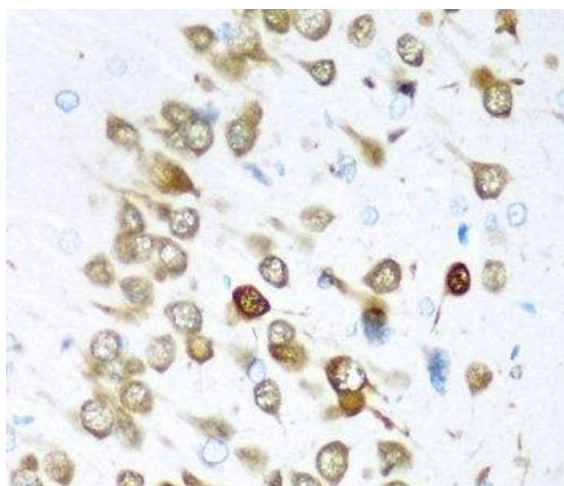
Immunofluorescence

Image 1. Immunofluorescence analysis of C6 cells using ELAVL3 Polyclonal Antibody at dilution of 1:100 (40x lens). Blue: DAPI for nuclear staining.



Western Blotting

Image 2. Western blot analysis of extracts of various cell lines using ELAVL3 Polyclonal Antibody at dilution of 1:1000.



Immunohistochemistry (Paraffin-embedded Sections)

Image 3. Immunohistochemistry of paraffin-embedded Rat brain using ELAVL3 Polyclonal Antibody at dilution of 1:200 (40x lens).

Please check the [product details page](#) for more images. Overall 6 images are available for ABIN7261946.