

Datasheet for ABIN7261950

**anti-IGF2BP3 antibody****4** Images[Go to Product page](#)

## Overview

|              |   |
|--------------|---|
| Quantity:    | 200 µL  |
| Target:      | IGF2BP3   |
| Reactivity:  | Human, Mouse, Rat                                   |
| Host:        | Rabbit  |
| Clonality:   | Polyclonal  |
| Conjugate:   | This IGF2BP3 antibody is un-conjugated              |
| Application: | Immunohistochemistry (IHC), Immunofluorescence (IF) |

## Product Details

|                  |  |
|------------------|--|
| Immunogen:       | Recombinant fusion protein of human IGF2BP3 (NP_006538.2). |
| Isotype:         | IgG  |
| Characteristics: | Polyclonal Antibody  |
| Purification:    | Affinity purification                                      |

## Target Details

|                   |  |
|-------------------|--|
| Target:           | IGF2BP3  |
| Alternative Name: | IGF2BP3 ( <a href="#">IGF2BP3 Products</a> )   |
| Background:       | The protein encoded by this gene is primarily found in the nucleolus, where it can bind to the 5' UTR of the insulin-like growth factor II leader 3 mRNA and may repress translation of insulin-like growth factor II during late development. The encoded protein contains several KH domains, which are important in RNA binding and are known to be involved in RNA synthesis and |

## Target Details

metabolism. A pseudogene exists on chromosome 7, and there are putative pseudogenes on other chromosomes.

Gene ID: 10643

UniProt: [O00425](#)

## Application Details

Application Notes: IHC 1:50-1:200 IF 1:50-1:100

Restrictions: For Research Use only

## Handling

Format: Liquid

Concentration: 1 mg/mL

Buffer: PBS with 0.02 % sodium azide, 50 % glycerol, pH 7.3

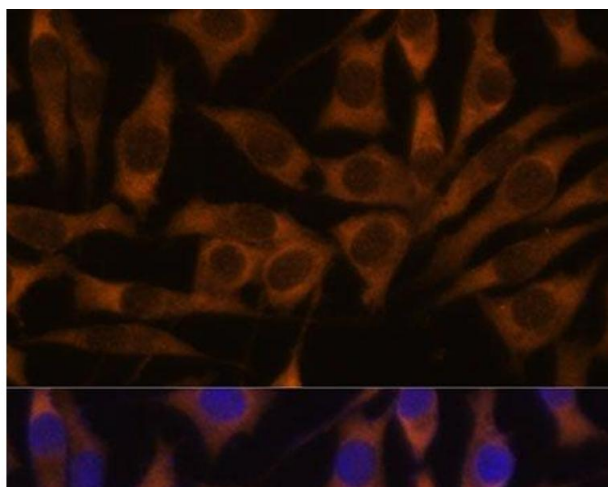
Preservative: Sodium azide

Precaution of Use: This product contains Sodium azide: a POISONOUS AND HAZARDOUS SUBSTANCE which should be handled by trained staff only.

Storage: -20 °C

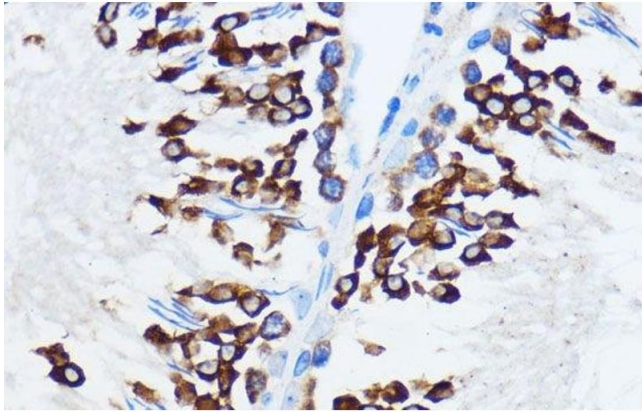
Storage Comment: Store at -20°C. Avoid freeze / thaw cycles.

## Images



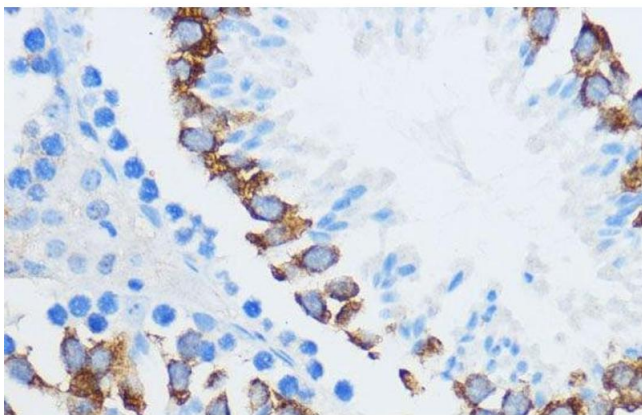
### Immunofluorescence

**Image 1.** Immunofluorescence analysis of L929 cells using IGF2BP3 Polyclonal Antibody at dilution of 1:100. Blue: DAPI for nuclear staining.



#### Immunohistochemistry (Paraffin-embedded Sections)

**Image 2.** Immunohistochemistry of paraffin-embedded Rat testis using IGF2BP3 Polyclonal Antibody at dilution of 1:100 (40x lens).



#### Immunohistochemistry (Paraffin-embedded Sections)

**Image 3.** Immunohistochemistry of paraffin-embedded Mouse testis using IGF2BP3 Polyclonal Antibody at dilution of 1:100 (40x lens).

Please check the [product details page](#) for more images. Overall 4 images are available for ABIN7261950.