



Datasheet for ABIN7262032

anti-TUBG1 antibody



[Go to Product page](#)

1 Image

Overview

Quantity:	200 µL
Target:	TUBG1
Reactivity:	Rat, Mouse
Host:	Rabbit
Clonality:	Polyclonal
Conjugate:	This TUBG1 antibody is un-conjugated
Application:	Western Blotting (WB)

Product Details

Immunogen:	Recombinant fusion protein of human TUBG1 (NP_001061.2).
Isotype:	IgG
Characteristics:	Polyclonal Antibody
Purification:	Affinity purification

Target Details

Target:	TUBG1
Alternative Name:	TUBG1 (TUBG1 Products)
Background:	This gene encodes a member of the tubulin superfamily. The encoded protein localizes to the centrosome where it binds to microtubules as part of a complex referred to as the gamma-tubulin ring complex. The protein mediates microtubule nucleation and is required for microtubule formation and progression of the cell cycle. A pseudogene of this gene is found on

Target Details

chromosome 7.

Molecular Weight: Observed_MW: 51 kDa
Calculated_MW: 51 kDa

Gene ID: 7283

UniProt: [P23258](#)

Pathways: [Microtubule Dynamics, M Phase](#)

Application Details

Application Notes: WB 1:500-1:2000

Restrictions: For Research Use only

Handling

Format: Liquid

Concentration: 1 mg/mL

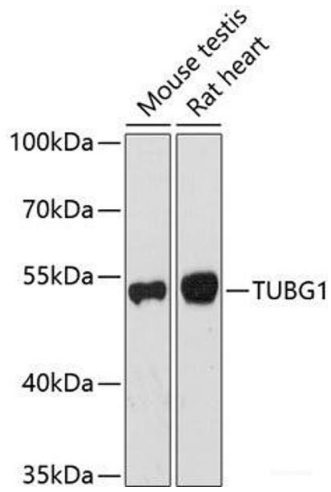
Buffer: PBS with 0.02 % sodium azide, 50 % glycerol, pH 7.3

Preservative: Sodium azide

Precaution of Use: This product contains Sodium azide: a POISONOUS AND HAZARDOUS SUBSTANCE which should be handled by trained staff only.

Storage: -20 °C

Storage Comment: Store at -20°C. Avoid freeze / thaw cycles.



Western Blotting

Image 1. Western blot analysis of extracts of various cell lines using TUBG1 Polyclonal Antibody at dilution of 1:1000.