

Datasheet for ABIN7262096

anti-MLANA antibody

2 Images

[Go to Product page](#)

Overview

Quantity:	200 µL
Target:	MLANA
Reactivity:	Human, Mouse, Rat
Host:	Rabbit
Clonality:	Polyclonal
Conjugate:	This MLANA antibody is un-conjugated
Application:	Western Blotting (WB), Immunofluorescence (IF)

Product Details

Immunogen:	Recombinant fusion protein of human MLANA (NP_005502.1).
Isotype:	IgG
Characteristics:	Polyclonal Antibody
Purification:	Affinity purification

Target Details

Target:	MLANA
Alternative Name:	MLANA (MLANA Products)
Background:	Melan-A is a melanocyte differentiation antigen, recognized by autologous cytotoxic T lymphocytes. Melan-A is also called MART-1 (melanoma antigen recognized by T cells). The Melan-A/MART-1 gene encodes this protein, 20-22 kDa, associated with endoplasmic reticulum and melanosomes. The function of the protein is unknown. Melan-A, isolated as a melanoma-

Target Details

specific antigen, is a transmembrane protein, which is expressed in skin, retina and the majority of cultured melanocytes as well as in melanomas. Melan A is expressed in more than 85 % of melanomas.

Molecular Weight: Observed_MW: 18 kDa
Calculated_MW: 13 kDa

Gene ID: 2315

UniProt: [Q16655](#)

Application Details

Application Notes: WB 1:500-1:2000 IF 1:50-1:200

Restrictions: For Research Use only

Handling

Format: Liquid

Concentration: 1 mg/mL

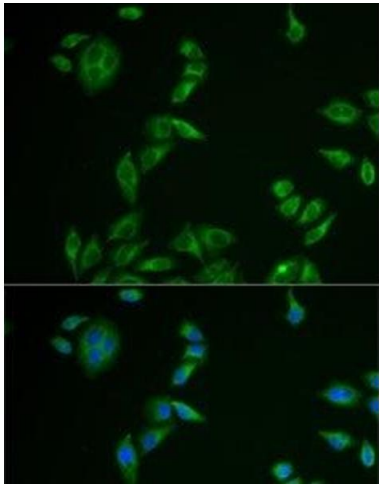
Buffer: PBS with 0.02 % sodium azide, 50 % glycerol, pH 7.3

Preservative: Sodium azide

Precaution of Use: This product contains Sodium azide: a POISONOUS AND HAZARDOUS SUBSTANCE which should be handled by trained staff only.

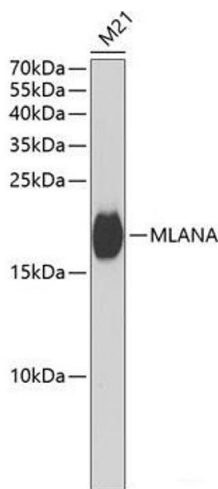
Storage: -20 °C

Storage Comment: Store at -20°C. Avoid freeze / thaw cycles.



Immunofluorescence

Image 1. Immunofluorescence analysis of U2OS cells using MLANA Polyclonal Antibody



Western Blotting

Image 2. Western blot analysis of extracts of M21 cells using MLANA Polyclonal Antibody at dilution of 1:1000.