



[Go to Product page](#)

Datasheet for ABIN7262108

## anti-Phosphoglucomutase 1 antibody

### 1 Image

#### Overview

Quantity:	200 µL
Target:	Phosphoglucomutase 1 (PGM1)
Reactivity:	Human, Mouse, Rat
Host:	Rabbit
Clonality:	Polyclonal
Conjugate:	This Phosphoglucomutase 1 antibody is un-conjugated
Application:	Immunofluorescence (IF)

#### Product Details

Immunogen:	Recombinant fusion protein of human PGM1 (NP_002624.2).
Isotype:	IgG
Characteristics:	Polyclonal Antibody
Purification:	Affinity purification

#### Target Details

Target:	Phosphoglucomutase 1 (PGM1)
Alternative Name:	PGM1 ( <a href="#">PGM1 Products</a> )
Background:	The protein encoded by this gene is an isozyme of phosphoglucomutase (PGM) and belongs to the phosphohexose mutase family. There are several PGM isozymes, which are encoded by different genes and catalyze the transfer of phosphate between the 1 and 6 positions of glucose. In most cell types, this PGM isozyme is predominant, representing about 90 % of total

## Target Details

---

PGM activity. In red cells, PGM2 is a major isozyme. This gene is highly polymorphic. Mutations in this gene cause glycogen storage disease type 14. Alternativley spliced transcript variants encoding different isoforms have been identified in this gene.

Gene ID: 5236

UniProt: [P36871](#)

Pathways: [Cellular Glucan Metabolic Process](#)

## Application Details

---

Application Notes: IF 1:10-1:100

Restrictions: For Research Use only

## Handling

---

Format: Liquid

Concentration: 1 mg/mL

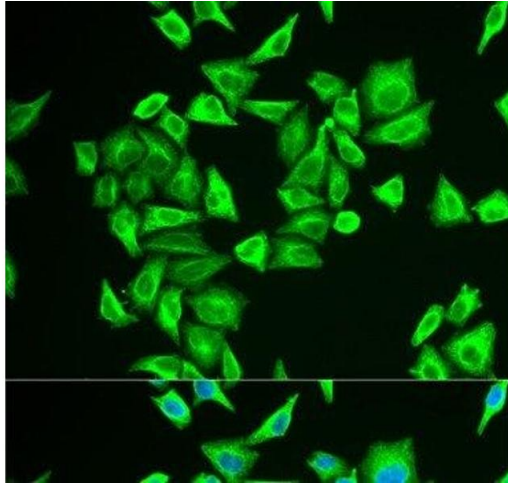
Buffer: PBS with 0.02 % sodium azide, 50 % glycerol, pH 7.3

Preservative: Sodium azide

Precaution of Use: This product contains Sodium azide: a POISONOUS AND HAZARDOUS SUBSTANCE which should be handled by trained staff only.

Storage: -20 °C

Storage Comment: Store at -20°C. Avoid freeze / thaw cycles.



### Immunofluorescence

**Image 1.** Immunofluorescence analysis of U2OS cells using PGM1 Polyclonal Antibody