

Datasheet for ABIN7262132

**anti-ZWINT antibody****3** Images[Go to Product page](#)

## Overview

Quantity:	200 µL
Target:	ZWINT
Reactivity:	Human, Mouse, Rat
Host:	Rabbit
Clonality:	Polyclonal
Conjugate:	This ZWINT antibody is un-conjugated
Application:	Immunofluorescence (IF)

## Product Details

Immunogen:	Recombinant fusion protein of human ZWINT (NP_008988.2).
Isotype:	IgG
Characteristics:	Polyclonal Antibody
Purification:	Affinity purification

## Target Details

Target:	ZWINT
Alternative Name:	ZWINT ( <a href="#">ZWINT Products</a> )
Background:	This gene encodes a protein that is clearly involved in kinetochore function although an exact role is not known. It interacts with ZW10, another kinetochore protein, possibly regulating the association between ZW10 and kinetochores. The encoded protein localizes to prophase kinetochores before ZW10 does and it remains detectable on the kinetochore until late

## Target Details

anaphase. It has a uniform distribution in the cytoplasm of interphase cells. Alternatively spliced transcript variants encoding different isoforms have been found for this gene.

Gene ID: 11130

UniProt: [O95229](#)

## Application Details

Application Notes: IF 1:50-1:200

Restrictions: For Research Use only

## Handling

Format: Liquid

Concentration: 1 mg/mL

Buffer: PBS with 0.02 % sodium azide, 50 % glycerol, pH 7.3

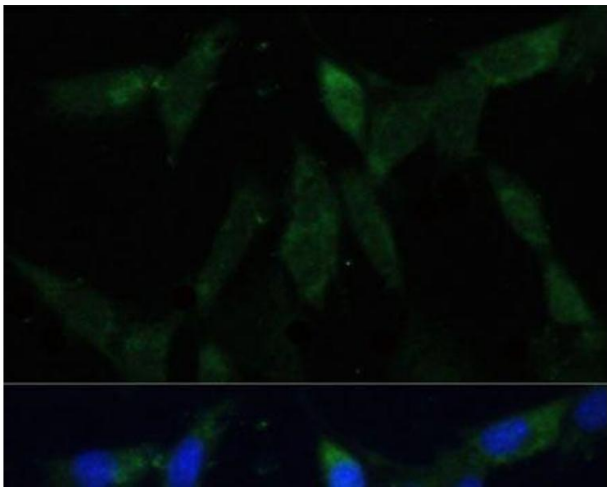
Preservative: Sodium azide

Precaution of Use: This product contains Sodium azide: a POISONOUS AND HAZARDOUS SUBSTANCE which should be handled by trained staff only.

Storage: -20 °C

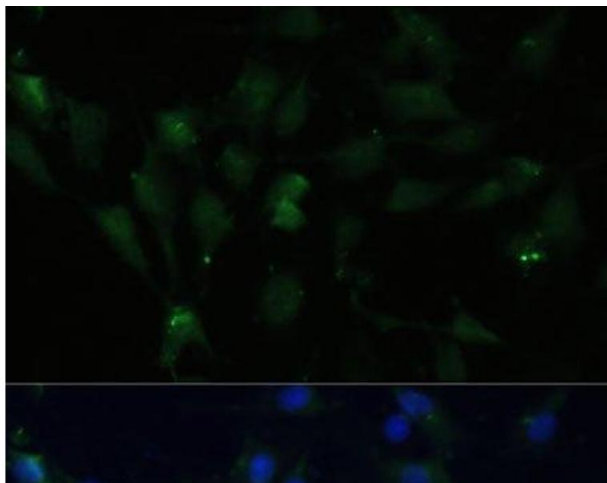
Storage Comment: Store at -20°C. Avoid freeze / thaw cycles.

## Images



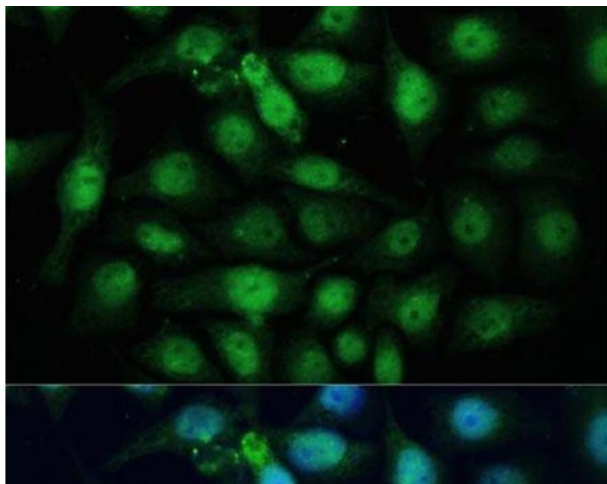
### Immunofluorescence

**Image 1.** Immunofluorescence analysis of NIH-3T3 cells using ZWINT Polyclonal Antibody at dilution of 1:100 (40x lens). Blue: DAPI for nuclear staining.



#### Immunofluorescence

**Image 2.** Immunofluorescence analysis of C6 cells using ZWINT Polyclonal Antibody at dilution of 1:100 (40x lens). Blue: DAPI for nuclear staining.



#### Immunofluorescence

**Image 3.** Immunofluorescence analysis of HeLa cells using ZWINT Polyclonal Antibody at dilution of 1:100 (40x lens). Blue: DAPI for nuclear staining.